



## 2021-22 Game Notes

# EASTERN KENTUCKY UNIVERSITY WOMEN'S BASKETBALL



### Eastern Kentucky University (4-5, 0-0 ASUN) VS.

### University of Louisville (8-1, 0-0 ACC)

Dec. 16 • 8 p.m. ET • Louisville, Ky. • KFC Yum Center (6,500)

#### QUICK NOTES

- The Colonels held Morehead State to 43 points which was six points below their season average on Dec. 15.
- Eastern Kentucky ranks 25th in the country in steals per game.
- The Colonels rank 14th in the country in offensive rebounding.
- This is the 34th all-time meeting between the two teams
- Louisville leads the all-time series between the two teams, 20-13.
- The Cardinals have won the last six games of the series.
- EKU returns four starters off last years team.

EASTERN KENTUCKY COLONELS		LOUISVILLE CARDINALS	
2021-22 Record:	4-5 (0-0 ASUN)	2021-22 Record:	8-1 (0-0 ACC)
Current Streak:	Won 1	Current Streak:	Won 8
Last Game:	Dec. 15, 2021 Won at Morehead State, 66-43 (Morehead, Ky.)	Last Game:	Dec. 12 2021 Won vs Kentucky, 64-58 (Louisville, Ky.)
Head Coach:	Greg Todd	Head Coach:	Jeff Walz
Alma Mater:	Eastern Kentucky, '83	Alma Mater:	Northern Kentucky, '95
Career Record:	266-175 (16th year)	Career Record:	393-109 (15th year)
at Eastern Ky.:	4-5 (1st year)	at Louisville:	393-109 (15th year)
vs. Louisville	0-0	vs. EKU:	1-0
WBB SID:	Chris Wells	WBB SID:	Nick Evans
E-Mail:	christofer.wells@eku.edu	E-Mail:	NickE@gocards.com
Website:	www.EKUsports.com	Website:	www.gocards.com

#### Social Networks



@EKUSports  
@EKUWBB



EKU Colonels  
EKU Women's  
Basketball



@EKUSports  
@EKUWBB

#### Eastern Kentucky Probable Starters (based on previous game)

No.	Name	Pos.	Ht.	Cl.	Hometown	G/GS	PPG	RPG	APG	Last Game
00	Jayla Johnson	F	6-2	Sr.	Dallas, Tx.	9/9	15.3	5.7	0.9	15 pts, 4 rebs
3	Brie Crittendon	G	5-10	Fr.	Union, Ky.	9/1	3.0	2.7	0.9	6 pts, 6 rebs, 2 assts
11	Ariel Kirkwood	G/F	6-0	r-So	Milwaukee, Wis.	9/9	8.8	8.0	2.2	11 pts, 12 rebs, 4 stls
15	Bria Bass	G/F	5-11	Gr.	Tucker, Ga.	9/9	6.0	5.9	0.6	6 pts, 4 rebs
30	Alice Recanati	G	5-9	r-Fr.	Bergamo, Italy	9/9	8.0	2.9	4.6	4 pts, 7 asst, 6 rebs
1	Arina Khlopova	G	6-0	r-So	Moscow, Russia	4/0	2.3	0.3	0.5	2 pts
2	Kayra Freeman	G	5-6	Fr.	Elizabethtown, Ky.	9/0	4.9	1.8	0.9	3 pts, 3 assts
5	Ally Collett	G	5-7	r-Fr.	London, Ky.	9/5	4.1	0.7	0.9	2 rebs
10	Georgia Baldwin	G/F	6-0	r-Fr.	Melbourne, Australia	1/0	0.0	0.0	0.0	2 mins
13	Ebony Simionovich	F	5-11	Fr.	Lavon, Israel	-/-	-/-	-/-	-/-	Did Not Play
20	Emma Hacker	F	6-3	r-So.	Frenchburg, Ky.	9/3	4.1	1.8	0.7	9 pts, 2 rebs
21	Anysa Jordan	F	6-1	r-So.	Fairmont, Va.	1/0	3.0	1.0	0.0	Did Not Play
22	Kalissa Lacy	G	5-9	Fr.	Charleston, W. Va.	9/0	4.0	0.9	0.7	1 stl
35	I'Liyah Green	C	6-3	Gr.	Louisville, Ky.	8/0	3.8	3.9	0.5	10 pts, 4 rebs
53	Bridgid Fox	F	6-0	r-So	Altoona, Pa.	8/0	6.4	3.5	0.4	Did Not Play

#### 2021-22 Schedule

##### NOVEMBER

11	TRANSYLVANIA	W, 74-51
14	at Northern Kentucky	L, 61-76
17	at Evansville	L, 57-67
22	UNION (KY)	W, 120-53
27	XAVIER	L, 60-73

##### DECEMBER

5	at Illinois	L, 57-71
9	CHATTANOOGA	W, 60-55
12	at Miami (OH)	L, 62-80
15	at Morehead State	W, 66-43
16	at Louisville	8 p.m.
18	PIKEVILLE	4:30 p.m.
21	at Appalachian State	1 p.m.
31	CUMBERLANDS (KY)	1 p.m.

##### JANUARY

5	CENTRAL ARKANSAS*	7 p.m.
8	at Bellarmine*	2 p.m.
12	at North Alabama*	7 p.m.
15	JACKSONVILLE STATE*	4:30 p.m.
19	LIPSCOMB*	7 p.m.
22	NORTH FLORIDA*	4:30 p.m.
27	at Florida Gulf Coast*	7:30 p.m.
29	at Stetson*	1 p.m.

##### FEBRUARY

3	KENNESAW STATE*	5 p.m.
5	LIBERTY*	4:30 p.m.
9	at Jacksonville*	2 p.m.
12	at Lipscomb*	2:30 p.m.
17	NORTH ALABAMA*	5 p.m.
19	at Central Arkansas*	2 p.m.
24	at Jacksonville State*	7 p.m.
26	BELLARMINE*	3:30 p.m.

Home Games In **BOLD CAPS**

\* Denotes ASUN Conference Game

Times given are Eastern Time and subject to change

Rankings are AP/Coaches

#### BROADCAST INFORMATION

##### RADIO/INTERNET

• ACCN

## Media Information

### CONTACT INFORMATION

Chris Wells (WBB Contact)  
 Assistant Director of Sports Communications  
 Work Phone: 859-893-9417 Cell: 859-893-9417  
 E-Mail: christofer.wells@eku.edu Fax: 859-622-5108  
 McBrayer Arena Press Row Phone: 859-622-5908

### MEDIA SERVICES

#### CREDENTIALS

Credentials are issued to members of the working media only. Requests for credentials should be made to Kevin Britton.

#### COACHES INTERVIEWS

All interviews with head coach Greg Todd and all assistant coaches must be arranged through the EKU Athletic Public Relations office. Please contact Chris Wells to arrange all interviews.

#### PLAYER INTERVIEWS

All interviews with EKU women's basketball players must be arranged through the EKU Athletic Public Relations office. Please contact Chris Wells to arrange all interviews.

#### PRACTICE

EKU women's basketball practices are generally open to the media. Media members should arrange all interviews through the EKU Athletic Public Relations Office by contacting Chris Wells.

#### POST-GAME INTERVIEWS

For home games, coach Todd and selected EKU players will be available in the media room after a brief cooling off period, generally 10 minutes after the game. For road games, coach Todd and selected players will be available outside the team's locker room, following the cooling off period. Please direct post-game interview request to Chris Wells.

**Locker Room** - The EKU locker room is closed to the media for all home and road games.

#### PRESS ROW SERVICE

Complete individual and team statistics and play-by-play will be available to the media following the game. One hour prior to tip-off, media packets containing a game program, flipcard, updated stats and game notes will be available in the media working area. Wireless internet access is available in McBrayer Arena.

#### ASUN CONFERENCE MEDIA RELATIONS

WBB Contact ..... Mike Devader  
 Phone ..... 785-633-9985  
 E-mail ..... mike.devader@asunsports.org  
 Web Site ..... www.asunsports.org

**NOTE:** Individual player notes are located on the player pages (pages 8-20).

#### LOCK DOWN DEFENSE

EKU stepped up the pressure and held Morehead State to 43 points, six points under their season average on Dec. 15.

#### FORCING TURNOVERS

The Colonels forced 20 RedHawk turnovers on Sunday Dec. 12.

#### REBOUND MARGIN

EKU out-rebounded the Mocs by 11, 44-33, on Dec. 9.

#### OFFENSIVE REBOUNDING

EKU posted 21 offensive rebounds against Illinois on Dec. 5.

#### DEFENSIVE PRESSURE

The Colonels forced 20 turnovers against Xavier on Nov. 27.

#### RECORD NIGHT

The Colonels 120 points scored against Union College were the second most scored in program history.

#### HOT FROM THE FIELD

EKU shot 59 percent from the field in the win against Union on Nov. 22.

#### OFF THE BENCH

The Colonels scored 26 points off the bench against Evansville on Nov. 17.

#### CLEANING THE GLASS

The Colonels out-rebounded Evansville 46-40 on the contest.

#### TURNING THEM OVER

The Colonels forced Northern Kentucky into 16 turnovers in the game on Nov. 14.

#### BALANCED ATTACK

Six different Colonels scored eight or more points in the win against Transylvania.

#### SHARING IS CARING

EKU had an assist on 15 of the teams 29 field goals in the game against Transylvania.

#### OFFENSIVE GLASS

The Colonels dominated the offensive glass pulling down 24 offensive rebounds against Transylvania.

#### GETTING DEFENSIVE

EKU held Transylvania to 29 percent shooting in the season opener.

#### NEW PLAYERS MAKING AN IMPACT

Transfer Ariel Kirkwood and freshmen Kayra

## EASTERN KENTUCKY vs. LOUISVILLE - TEAM COMPARISONS

### EASTERN KENTUCKY (4-5, 0-0 ASUN)

Team Statistics	EKU	OPP
Scoring Offense	68.6	63.2
Scoring Margin	+5.3	---
FG Percentage	.376	.399
3-Pt. FG Percentage	.248	.263
Free Throw Percentage	.724	.694
Rebounds Per Game	41.9	36.7
Rebound Margin	+5.2	---
Assists Per Game	13.2	14.6
Turnovers Per Game	19.0	22.2
Turnover Margin	+3.2	---
Steals Per Game	11.7	10.0
Blocks Per Game	3.3	3.6

### INDIVIDUAL LEADERS

SCORING	GM	Pts.	PPG
Jayla Johnson	9	138	15.3
Ariel Kirkwood	9	79	8.8
Alice Recanat	9	72	8.0
Bridgid Fox	8	51	6.4

REBOUNDS	GM	Reb.	RPG
Ariel Kirkwood	9	72	8.0
Bria Bass	9	53	5.9

ASSISTS	GM	Asst.	APG
Alice Recanat	9	40	4.6
Ariel Kirkwood	9	20	2.2

### LOUISVILLE (8-1, 0-0 ACC)

Team Statistics	UL	OPP
Scoring Offense	69.0	47.7
Scoring Margin	+21.3	--
FG Percentage	.453	.336
3-Pt. FG Percentage	.343	.237
Free Throw Percentage	.714	.713
Rebounds Per Game	41.0	30.0
Rebound Margin	+11.0	--
Assists Per Game	14.2	9.1
Turnovers Per Game	15.6	20.3
Turnover Margin	+4.7	--
Steals Per Game	9.8	5.4
Blocks Per Game	4.4	2.6

### INDIVIDUAL LEADERS

SCORING	GM	Pts.	PPG
Kianna Smith	9	53	11.2
Haley Van Lith	9	73	10.6
Emily Engstler	9	62	9.9
Chelsie Hall	9	45	6.9

REBOUNDS	GM	Reb.	RPG
Emily Engstler	9	81	9.0
Olivia Cochran	9	45	5.0

ASSISTS	GM	Asst.	APG
Myksasa Robinson	9	20	2.2
Kianna Smith	9	18	1.0



### NCAA TEAM RANKINGS (through 12/15/21)

Team Statistics	EKU	UL
Scoring Offense	128	123
Scoring Defense	184	4
Scoring Margin	151	19
FG Percentage	269	43
FG Percentage Defense	193	22
3-Pt. FG Per Game	266	227
3-Pt. FG Percentage	311	76
3-Pt. FG Pct. Defense	67	21
Free Throw Percentage	108	127
Rebound Margin	86	19
Assists Per Game	174	121
Assist/Turnover Ratio	239	124
Blocks Per Game	146	53
Steals Per Game	25	83
Turnovers Per Game	285	125
Turnovers Margin	82	47
Fewest Personal Fouls/G	165	67

349 Division I teams



Freeman and Kalissa Lacy made instant impacts for the Colonels in the season opener.

### STEPPING UP THE PRESSURE

The Colonels held Transylvania to zero field goals in the fourth quarter in the season opener.

### STARTERS RETURNING

The Colonels return four starters off last years team, including leading scorer Jayla Johnson.

### NEW FACES

EKU welcomes in eight new players to this years team.

### ALL THE TRANSFERS

Eastern Kentucky hit the transfer portal hard over the summer bringing in four DI transfers to this years team.

### Starting Lineups

Johnson, Collett, Kirkwood, Bass, Recanati .....	2-3
Johnson, Kirkwood, Bass, Hacker, Recanati .....	1-2
Johnson, Crittendon, Kirkwood, Bass, Recanati .....	1-0

### 2021-2022 Awards

### Double-Digit Scoring Games

Career (This Season)	
Bria Bass .....	52 (1)
I'Liyah Green.....	12 (1)
Anysa Jordan.....	7 (0)
Alice Recanati .....	12 (2)
Emma Hacker .....	4 (0)
Jayla Johnson .....	22 (7)
Kayra Freeman .....	3 (3)
Kalissa Lacy .....	1 (1)
Ariel Kirkwood .....	4 (4)
Bridgid Fox .....	2 (2)
Brie Crittendon .....	1 (1)

### INTERNATIONAL

The Colonels have four international players on the roster with Alice Recanati, Georgia Baldwin, Arina Khlopkova and Ebony Simionovich.

### SENIOR LEADERSHIP

EKU returns three senior leaders off last years squad in Bria Bass, I'Liyah Green and Jayla Johnson.

### GREG TODD ERA

The Eastern Kentucky alum will coach his first game as a Colonel, when EKU takes on Transylvania where Coach Todd use to coach.

### 1,000 POINT SCORER

After scoring her 1,000th career point against Belmont in February, Bria Bass will return to add to her successful career.

## EKU Preseason Quick Facts

### UNIVERSITY INFORMATION

Name .....	Eastern Kentucky University
Location .....	Richmond, Ky.
Founded/Enrollment .....	1906/16,959
Nickname .....	Colonels
Colors .....	Maroon (PMS 209) and White
Affiliation .....	NCAA Division I
Conference .....	Ohio Valley Conference
Arena (Capacity) .....	McBayer Arena (6,500)
Press Row Phone .....	(859) 622-5908
President .....	Dr. David McFaddin
Director of Athletics .....	Matt Roan
Senior Woman Administrator .....	Rachel Park
Athletics Dept. Phone Number .....	(859) 622-2120

### COACHING STAFF

Head Coach .....	Greg Todd
Alma Mater .....	Eastern Kentucky '83
Record at EKU (Years) .....	4-5 (1)
Career Record (Years) .....	266-175 (15)
Associate Head Coach .....	Matt Thune (3rd Season)
Alma Mater .....	Indiana '12
Assistant Coach .....	Abby Owings (1st Season)
Alma Mater .....	Thomas More '18
Assistant Coach .....	Coretta Brown (1st Season)
Alma Mater .....	North Carolina '03
Director of Operations .....	Lindsay Hieronymus (2nd Season)
Alma Mater .....	Transylvania '16

### 2020-21 SEASON IN REVIEW

2020-21 Record .....	9-15
Ohio Valley Conference .....	8-12
Conference Finish .....	9th of 12 teams
Starters Returning/Lost .....	4/1
Letterwinners Returning/Lost .....	7/6
Newcomers .....	8

### HISTORY

All-Time Record .....	664-685
NCAA Tournament Appearances .....	2
OVC Regular Season Championships .....	5
OVC Tournament Championships .....	2

### 2021-22 Eastern Kentucky Numerical Roster

No.	Name	Pos.	Ht.	Class	Hometown (Previous School)
00	Jayla Johnson	F	6-2	Sr.	Dallas, Tx. (Texas State)
1	Arina Khlopkova	G	6-0	R-So.	Moscow, Russia (UTEP)
2	Kayra Freeman	G	5-5	Fr.	Elizabethtown, Ky. (Elizabethtown HS)
3	Brie Crittendon	G	5-10	Fr.	Union, Ky. (Ryle HS)
5	Ally Collett	G	5-7	R-Fr.	London, Ky. (Western Kentucky)
10	Georgia Baldwin	G/F	6-0	Fr.	Melbourne, Australia (Box Hill Senior Secondary School)
11	Ariel Kirkwood	G/F	6-0	R-So.	Milwaukee, Wis. (Morehead State)
13	Ebony Simionovich	F	5-11	Fr.	Lavon, Israel (Israeli National Team)
15	Bria Bass	G/F	5-11	Sr.	Tucker, Ga. (Tucker HS)
20	Emma Hacker	F	6-3	So.	Frenchburg, Ky. (Menifee HS)
21	Anysa Jordan	F	6-1	So.	Fairmont, W.Va. (Fairmont HS)
22	Kalissa Lacy	G	5-9	Fr.	Charleston, W.Va. (George Washington HS)
30	Alice Recanati	G	5-9	Fr.	Bergamo, Italy (Team 86 Villasanta)
35	I'Liyah Green	C	6-2	R-Sr.	Louisville, Ky. (Cincinnati)
53	Bridgid Fox	F	6-0	R-So	Altoona, Pa. (Detroit Mercy)

Head Coach: Greg Todd (Eastern Kentucky, 1986), First Season

Assistant Coaches: Matt Thune (Indiana, 2012), Third Season

Abby Owings (Thomas More, 2018), First Season

Coretta Brown (North Carolina, 2003), First Season

Director of Basketball Operations: Lindsay Hieronymus, (Transylvania, 2016)



**2021-22 Eastern Ky. Women's Basketball**  
**Season/Career Statistics**  
**All games**

Page 1/1  
as of Dec 16, 2021

**Summary**

Player	Season Statistics										Career Statistics									
	GP-GS	MIN/G	FG%	3FG%	FT%	R/G	A/G	STL	BLK	PTS/G	GP-GS	MIN/G	FG%	3FG%	FT%	R/G	A/G	STL	BLK	PTS/G
BALDWIN, Georgia	1-0	2.0	.000	.000	.000	1.0	0.0	0	0	0.0	7-0	5.2	.308	.000	.250	0.7	0.1	1	0	1.3
BASS, Bria	9-9	23.9	.345	.071	.652	5.9	0.6	5	0	6.0	118-104	29.6	.371	.279	.710	5.8	0.9	92	8	9.2
COLLETT, Ally	9-5	18.1	.216	.250	.700	0.7	0.9	11	1	4.1	9-5	18.1	.216	.250	.700	0.7	0.9	11	1	4.1
CRITTENDON, Brie	9-1	11.5	.381	.143	.714	2.7	0.9	8	1	3.0	9-1	11.5	.381	.143	.714	2.7	0.9	8	1	3.0
FOX, Bridgid	8-0	15.4	.607	.000	.850	3.5	0.4	1	0	6.4	8-0	15.4	.607	.000	.850	3.5	0.4	1	0	6.4
FREEMAN, Kayra	9-0	13.1	.625	.000	.933	1.8	0.9	8	0	4.9	9-0	13.1	.625	.000	.933	1.8	0.9	8	0	4.9
GREEN, I'Liyah	8-0	12.8	.371	.000	.667	3.9	0.5	2	2	3.8	37-28	23.9	.449	.192	.647	6.8	0.9	30	52	6.9
HACKER, Emma	9-3	16.2	.394	.313	.750	1.8	0.7	8	1	4.1	44-15	15.4	.358	.292	.630	2.3	0.8	29	24	4.5
JOHNSON, Jayla	9-9	23.2	.366	.370	.732	5.7	0.9	12	3	15.3	29-27	23.9	.431	.371	.721	4.7	0.8	29	16	14.1
JORDAN, Anyssa	1-0	5.9	1.000	.000	1.000	1.0	0.0	2	3	3.0	52-8	13.6	.382	.222	.733	3.1	0.4	26	11	4.8
KHLOPKOVA, Arina	4-0	3.9	.667	.500	.000	0.3	0.5	0	1	2.3	4-0	3.9	.667	.500	.000	0.3	0.5	0	1	2.3
KIRKWOOD, Ariel	9-9	26.0	.431	.200	.682	8.0	2.2	21	18	8.8	9-9	26.0	.431	.200	.682	8.0	2.2	21	18	8.8
LACY, Kalissa	9-0	10.5	.250	.195	1.000	0.9	0.7	7	0	4.0	9-0	10.5	.250	.195	1.000	0.9	0.7	7	0	4.0
RECANATI, Alice	9-9	29.7	.355	.313	.619	2.9	4.6	20	0	8.0	33-30	30.9	.407	.314	.762	3.7	4.0	43	7	8.5

**Scoring**

Player	Season Statistics								Career Statistics							
	FG-FGA	FG%	3FG-3FGA	3FG%	FT-FTA	FT%	PTS	PTS/G	FG-FGA	FG%	3FG-3FGA	3FG%	FT-FTA	FT%	PTS	PTS/G
BALDWIN, Georgia	0-0	.000	0-0	.000	0-2	.000	0	0.0	4-13	.308	0-2	.000	1-4	.250	9	1.3
BASS, Bria	19-55	.345	1-14	.071	15-23	.652	54	6.0	381-1027	.371	122-437	.279	198-279	.710	1082	9.2
COLLETT, Ally	11-51	.216	8-32	.250	7-10	.700	37	4.1	11-51	.216	8-32	.250	7-10	.700	37	4.1
CRITTENDON, Brie	8-21	.381	1-7	.143	10-14	.714	27	3.0	8-21	.381	1-7	.143	10-14	.714	27	3.0
FOX, Bridgid	17-28	.607	0-0	.000	17-20	.850	51	6.4	17-28	.607	0-0	.000	17-20	.850	51	6.4
FREEMAN, Kayra	15-24	.625	0-0	.000	14-15	.933	44	4.9	15-24	.625	0-0	.000	14-15	.933	44	4.9
GREEN, I'Liyah	13-35	.371	0-0	.000	4-6	.667	30	3.8	109-243	.449	5-26	.192	33-51	.647	256	6.9
HACKER, Emma	13-33	.394	5-16	.313	6-8	.750	37	4.1	64-179	.358	35-120	.292	34-54	.630	197	4.5
JOHNSON, Jayla	49-134	.366	10-27	.370	30-41	.732	138	15.3	155-360	.431	23-62	.371	75-104	.721	408	14.1
JORDAN, Anyssa	1-1	1.000	0-0	.000	1-1	1.000	3	3.0	91-238	.382	10-45	.222	55-75	.733	247	4.8
KHLOPKOVA, Arina	4-6	.667	1-2	.500	0-0	.000	9	2.3	4-6	.667	1-2	.500	0-0	.000	9	2.3
KIRKWOOD, Ariel	31-72	.431	2-10	.200	15-22	.682	79	8.8	31-72	.431	2-10	.200	15-22	.682	79	8.8
LACY, Kalissa	13-52	.250	8-41	.195	2-2	1.000	36	4.0	13-52	.250	8-41	.195	2-2	1.000	36	4.0
RECANATI, Alice	27-76	.355	5-16	.313	13-21	.619	72	8.0	101-248	.407	16-51	.314	64-84	.762	282	8.5

**Totals**

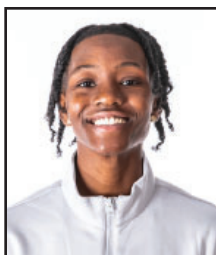
Player	Season Statistics								Career Statistics							
	O-REB	D-REB	TOTAL	PF	FO	A	TO	A/TO	O-REB	D-REB	TOTAL	PF	FO	A	TO	A/TO
BALDWIN, Georgia	0	1	1	0	0	0	0	0.0	2	3	5	4	0	1	5	0.2
BASS, Bria	22	31	53	13	0	5	16	0.3	219	467	686	242	4	107	226	0.5
COLLETT, Ally	2	4	6	5	0	8	13	0.6	2	4	6	5	0	8	13	0.6
CRITTENDON, Brie	6	18	24	7	0	8	7	1.1	6	18	24	7	0	8	7	1.1
FOX, Bridgid	12	16	28	13	0	3	8	0.4	12	16	28	13	0	3	8	0.4
FREEMAN, Kayra	7	9	16	11	0	8	16	0.5	7	9	16	11	0	8	16	0.5
GREEN, I'Liyah	16	15	31	4	0	4	5	0.8	88	163	251	84	4	33	60	0.6
HACKER, Emma	1	15	16	16	0	6	12	0.5	20	82	102	91	3	34	43	0.8
JOHNSON, Jayla	17	34	51	29	2	8	29	0.3	40	97	137	101	5	22	92	0.2
JORDAN, Anyssa	0	1	1	1	0	0	1	0.0	65	96	161	109	1	19	70	0.3
KHLOPKOVA, Arina	0	1	1	2	0	2	1	2.0	0	1	1	2	0	2	1	2.0

## 2021-22 Statistics

## Individual Career Stats

## Individual Career Stats





00

**JAYLA JOHNSON****Forward • 6-2 • Senior****Dallas, TX. • Texas State****The Johnson File**

Majoring in General Studies with a minor in special education, sociology, and psychology

**Season and Career Highs**

<b>Season</b>	<b>EKU Career</b>
35, vs Chattanooga, 12/9/21	35, at Chattanooga, 12/9/21
9, vs Union, 11/22/21	10, at Belmont, 2/11/21
19, three times	20, vs Murray State, 2/6/21
3, at Evansville, 11/17/21	3, two times
8, at Evansville, 11/17/21	8, at Evansville, 11/17/21
7, two times	7, two times
8, vs Xavier, 11/27/21	8, vs Xavier, 11/27/21
7, at Illinois, 12/5/21	7, at Illinois, 12/5/21
11, vs Chattanooga, 12/9/21	11, at Chattanooga, 12/9/21
12, vs Chattanooga, 12/9/21	12, at Chattanooga, 12/9/21
2, two times	2, six times
1, third times	2, two times
2, six times	2, eight times
26, vs Union, 11/22/21	26, two times

**FIRST DOUBLE-DOUBLE**

Johnson posted her first career double-double as a Colonel with 17 points and 12 rebounds in the win against Chattanooga on Dec. 9.

**OFFENSIVE GLASS**

Johnson had a career-best seven offensive rebounds against Illinois on Dec. 5.

**IN A GROOVE**

Jayla Johnson has posted four straight double-digit games, two of them she scored 20 or more points.

**CAREER HIGH**

Jayla Johnson tied a career-best 26 points in the 120-53, win over Union College on Nov. 22.

**Game-by-Game Statistics**

<b>Opponent</b>	<b>GS</b>	<b>Min</b>	<b>FG-A</b>	<b>Pct.</b>	<b>3FG-A</b>	<b>Pct.</b>	<b>FT-A</b>	<b>Pct.</b>	<b>Off</b>	<b>Def</b>	<b>Tot</b>	<b>PF</b>	<b>A</b>	<b>TO</b>	<b>Blk</b>	<b>S</b>	<b>Pts</b>
TRANSYLVANIA	*	26	4-17	.235	1-2	.500	0-2	.000	2	5	7	2	2	3	0	0	9
at Northern Kentucky	*	14	3-7	.429	0-1	.000	2-2	1.000	0	1	1	5	0	1	1	2	8
at Evansville	*	23	4-19	.211	3-8	.375	3-6	.500	2	4	6	5	0	6	0	2	14
UNION	*	21	9-19	.474	1-2	.500	7-7	1.000	2	1	3	3	1	3	0	2	26
XAVIER	*	25	5-13	.385	0-3	.000	7-8	.875	2	5	7	4	0	4	0	2	17
at Illinois	*	30	8-19	.421	2-5	.400	2-6	.333	7	0	7	3	1	1	0	2	20
CHATTANOOGA	*	35	5-17	.294	2-3	.667	5-6	.833	1	11	12	2	0	4	0	0	17
at Miami (OH)	*	20	5-11	.455	0-0	.000	2-2	1.000	1	4	5	4	1	4	1	2	12
at Morehead State	*	15	6-10	.600	1-3	.333	2-2	1.000	1	3	4	1	2	3	1	0	15
at Louisville																	
PIKEVILLE																	
at Appalachian State																	
CUMBERLANDS																	
CENTRAL ARKANSAS*																	
at Bellarmine*																	
at North Alabama*																	
JACKSONVILLE STATE*																	
LIPSCOMB*																	
NORTH FLORIDA*																	
at Florida Gulf Coast*																	
at Stetson*																	
KENNESAW STATE*																	
LIBERTY*																	
at Jacksonville*																	
at Lipscomb*																	
NORTH ALABAMA*																	
at Central Arkansas*																	
at Jacksonville State*																	
BELLARMINE*																	





1

**ARINA KHLOPKOVA****Guard • 6-0 • R-Sophomore****Moscow, Russia. • UTEP****The Khlopko File**

Double majoring in Finance and Insurance &amp; Risk management

**Season and Career Highs**

<b>Season</b>	<b>Min</b>	<b>EKU Career</b>
6, vs Union, 11/22/21	<b>FG</b>	6, vs Union, 11/22/21
3, vs Union, 11/22/21	<b>FGA</b>	3, vs Union, 11/22/21
3, vs Union, 11/22/21	<b>3FG</b>	3, vs Union, 11/22/21
1, vs Union, 11/22/22	<b>3FGA</b>	1, vs Union, 11/22/22
1, two times	<b>FT</b>	1, two times
	<b>FTA</b>	
	<b>OReb</b>	
1, vs Union, 11/22/21	<b>DReb</b>	1, vs Union, 11/22/21
1, vs Union, 11/22/21	<b>Reb</b>	1, vs Union, 11/22/21
2, vs Union, 11/22/21	<b>Asst</b>	2, vs Union, 11/22/21
1, vs Union, 11/22/21	<b>Blocks</b>	1, vs Union, 11/22/21
	<b>Steals</b>	
7, vs Union, 11/22/21	<b>Points</b>	7, vs Union, 11/22/21

**Game-by-Game Statistics**

<b>Opponent</b>	<b>GS</b>	<b>Min</b>	<b>FG-A</b>	<b>Pct.</b>	<b>3FG-A</b>	<b>Pct.</b>	<b>FT-A</b>	<b>Pct.</b>	<b>Off</b>	<b>Def</b>	<b>Tot</b>	<b>PF</b>	<b>A</b>	<b>TO</b>	<b>Blk</b>	<b>S</b>	<b>Pts</b>
TRANSYLVANIA																	
at Northern Kentucky																	
at Evansville	3	0-1	.000	0-1	.000	0-0	.000	0	0	0	0	0	0	0	0	0	0
UNION	6	3-3	1.000	1-1	1.000	0-0	.000	0	1	1	1	2	0	1	0	7	
XAVIER																	
at Illinois																	
CHATTANOOGA																	
at Miami (OH)	2	0-0	.000	0-0	.000	0-0	.000	0	0	0	0	0	0	0	0	0	0
at Morehead State	5	1-2	.500	0-0	.000	0-0	.000	0	0	0	1	0	1	0	0	2	
at Louisville																	
PIKEVILLE																	
at Appalachian State																	
CUMBERLANDS																	
CENTRAL ARKANSAS*																	
at Bellarmine*																	
at North Alabama*																	
JACKSONVILLE STATE*																	
LIPSCOMB*																	
NORTH FLORIDA*																	
at Florida Gulf Coast*																	
at Stetson*																	
KENNESAW STATE*																	
LIBERTY*																	
at Jacksonville*																	
at Lipscomb*																	
NORTH ALABAMA*																	
at Central Arkansas*																	
at Jacksonville State*																	
BELLARMINE*																	



2

**KAYRA FREEMAN****Guard • 5-5 • Freshman**

Elizabethtown, Ky. • Elizabethtown HS

## The Freeman File

Majoring in

## Season and Career Highs

**Season**

25, at Evansville, 11/17/21

5, at Evansville, 11/17/21

7, at Evansville, 11/17/21

5, vs Union, 11/22/21

5, vs Union, 11/22/21

2, two times

3, at Northern Kentucky, 11/14/21

5, at Northern Kentucky, 11/14/21

3, at Morehead State, 12/15/21

4, two times

11, three times

**EKU Career**

25, at Evansville, 11/17/21

5, at Evansville, 11/17/21

7, at Evansville, 11/17/21

**3FG****3FGA****FT**

5, vs Union, 11/22/21

**FTA**

5, vs Union, 11/22/21

**OReb**

2, two times

**DReb**

3, at Northern Kentucky, 11/14/21

**Reb**

5, at Northern Kentucky, 11/14/21

**Asst**

3, at Morehead State, 12/15/21

**Blocks****Steals**

4, two times

**Points**

11, three times

**PERFECT FROM THE FIELD**

Kayra went a perfect 4-for-4 from the field and 3-for-3 from the free-throw line against Transylvania (Nov. 11).

**LEADING THE WAY**

Kayra Freeman made an immediate impact posting a team-best 11 points off the bench against Transylvania (Nov. 11).

## Game-by-Game Statistics

Opponent	GS	Min	FG-A	Pct.	3FG-A	Pct.	FT-A	Pct.	Off	Def	Tot	PF	A	TO	Blk	S	Pts
TRANSYLVANIA	14	4-4	1.000	0-0	.000	3-3	1.000	2	0	2	2	1	0	0	4	11	
at Northern Kentucky	12	1-4	.250	0-0	.000	0-0	.000	2	3	5	1	0	4	0	0	2	
at Evansville	25	5-7	.714	0-0	.000	1-1	1.000	1	2	3	2	1	3	0	0	11	
UNION	18	3-4	.750	0-0	.000	5-5	1.000	1	1	2	1	2	3	0	2	11	
XAVIER	11	0-0	.000	0-0	.000	0-0	.000	0	1	1	2	0	1	0	2	0	
at Illinois	12	0-1	.000	0-0	.000	0-0	.000	0	1	1	2	0	2	0	0	0	
CHATTANOOGA	11	0-1	.000	0-0	.000	2-2	1.000	0	0	0	0	0	1	0	0	2	
at Miami (OH)	5	1-1	1.000	0-0	.000	2-2	1.000	0	0	0	0	0	0	0	1	4	
at Morehead State	10	1-2	.500	0-0	.000	1-2	.500	1	1	2	1	3	1	0	1	3	
at Louisville																	
PIKEVILLE																	
at Appalachian State																	
CUMBERLANDS																	
CENTRAL ARKANSAS*																	
at Bellarmine*																	
at North Alabama*																	
JACKSONVILLE STATE*																	
LIPSCOMB*																	
NORTH FLORIDA*																	
at Florida Gulf Coast*																	
at Stetson*																	
KENNESAW STATE*																	
LIBERTY*																	
at Jacksonville*																	
at Lipscomb*																	
NORTH ALABAMA*																	
at Central Arkansas*																	
at Jacksonville State*																	
BELLARMINE*																	



3

**BRIE CRITTENDON****Guard • 5-10 • Freshman****Union, Ky. • Ryle HS****The Crittendon File**

Majoring in Chemistry/Biology

**Season and Career Highs**

<b>Season</b>	<b>EKU Career</b>
31, at Miami (OH), 12/12/21	31, at Miami (OH), 12/12/21
3, vs Union, 11/22/21	3, vs Union, 11/22/21
7, at Morehead State, 12/15/21	7, at Morehead State, 12/15/21
1, vs Union, 11/22/21	1, vs Union, 11/22/21
1, four times	1, four times
6, at Miami (OH), 12/12/21	6, at Miami (OH), 12/12/21
6, at Miami (OH), 12/12/21	6, at Miami (OH), 12/12/21
2, two times	2, two times
5, two times	5, two times
7, at Miami (OH), 12/12/21	7, at Miami (OH), 12/12/21
3, at Miami (OH), 12/12/21	3, at Miami (OH), 12/12/21
1, vs Transylvania, 11/11/21	1, vs Transylvania, 11/11/21
2, two times	2, two times
10, at Miami (OH), 12/12/21	10, at Miami (OH), 12/12/21

**CONTINUING TO GET BETTER**

Brie Crittendon continued her good week posting 10 points, seven rebounds, three assists, and two steals off the bench against Miami (OH) on Dec. 12.

**SPARK OFF THE BENCH**

Brie Crittendon was big off the bench against Chattanooga on Dec. 9 posting a career-best in minutes played, offensive rebounds, defensive rebounds, and total rebounds.

**Game-by-Game Statistics**

<b>Opponent</b>	<b>GS</b>	<b>Min</b>	<b>FG-A</b>	<b>Pct.</b>	<b>3FG-A</b>	<b>Pct.</b>	<b>FT-A</b>	<b>Pct.</b>	<b>Off</b>	<b>Def</b>	<b>Tot</b>	<b>PF</b>	<b>A</b>	<b>TO</b>	<b>Blk</b>	<b>S</b>	<b>Pts</b>
TRANSLYVANIA	3	0-0	.000	0-0	.000	0-0	.000	0	1	1	1	0	1	0	0	0	0
at Northern Kentucky	5	0-0	.000	0-0	.000	0-0	.000	0	0	0	0	0	0	0	2	0	0
at Evansville	6	0-2	.000	0-1	.000	0-0	.000	0	1	1	1	0	1	0	1	0	0
UNION	11	3-3	1.000	1-1	1.000	1-2	.500	0	2	2	3	2	0	0	1	8	8
XAVIER	4	0-0	.000	0-0	.000	0-2	.000	1	1	2	0	0	0	0	0	0	0
at Illinois	5	0-0	.000	0-0	.000	0-0	.000	0	0	0	0	0	2	0	0	0	0
CHATTANOOGA	14	1-3	.333	0-1	.000	1-2	.500	2	3	5	1	0	2	0	1	3	3
at Miami (OH)	31	2-6	.333	0-1	.000	6-6	1.000	2	5	7	1	3	1	0	2	10	10
at Morehead State	* 25	2-7	.286	0-3	.000	2-2	1.000	1	5	6	0	2	1	0	1	6	6
at Louisville																	
PIKEVILLE																	
at Appalachian State																	
CUMBERLANDS																	
CENTRAL ARKANSAS*																	
at Bellarmine*																	
at North Alabama*																	
JACKSONVILLE STATE*																	
LIPSCOMB*																	
NORTH FLORIDA*																	
at Florida Gulf Coast*																	
at Stetson*																	
KENNESAW STATE*																	
LIBERTY*																	
at Jacksonville*																	
at Lipscomb*																	
NORTH ALABAMA*																	
at Central Arkansas*																	
at Jacksonville State*																	
BELLARMINE*																	



5

**ALLY COLLETT****Guard • 5-7 • R-Freshman****London, Ky. • Western Kentucky****The Collett File**

Majoring in Deaf and Hard of Hearing

**Season and Career Highs**

<b>Season</b>	<b>EKU Career</b>
27, at Northern Kentucky, 11/14/21	27, at Northern Kentucky, 11/14/21
2, five times	2, five times
9, two times	9, two times
2, two times	2, two times
7, at Northern Kentucky, 11/14/21	7, at Northern Kentucky, 11/14/21
4, at Evansville, 11/17/21	4, at Evansville, 11/17/21
4, two times	4, two times
1, two times	1, two times
2, at Northern Kentucky, 11/14/21	2, at Northern Kentucky, 11/14/21
2, two times	2, two times
2, at Evansville, 11/17/21	2, at Evansville, 11/17/21
1, at Northern Kentucky, 11/14/21	1, at Northern Kentucky, 11/14/21
3, vs Miami (OH), 12/12/21	3, vs Miami (OH), 12/12/21
8, at Northern Kentucky, 11/14/21	8, at Northern Kentucky, 11/14/21

**Game-by-Game Statistics**

<b>Opponent</b>	<b>GS</b>	<b>Min</b>	<b>FG-A</b>	<b>Pct.</b>	<b>3FG-A</b>	<b>Pct.</b>	<b>FT-A</b>	<b>Pct.</b>	<b>Off</b>	<b>Def</b>	<b>Tot</b>	<b>PF</b>	<b>A</b>	<b>TO</b>	<b>Blk</b>	<b>S</b>	<b>Pts</b>
TRANSYLVANIA	*	23	2-9	.222	1-4	.250	0-0	.000	0	0	0	1	1	0	0	2	5
at Northern Kentucky	*	27	2-9	.222	2-7	.286	2-4	.500	0	2	2	0	1	1	1	1	8
at Evansville	*	21	0-5	.000	0-3	.000	4-4	1.000	0	0	0	2	2	3	0	0	4
UNION	*	20	1-6	.167	1-3	.333	0-0	.000	0	0	0	0	2	2	0	2	3
XAVIER	*	18	2-5	.400	1-2	.500	1-2	.500	0	1	1	0	0	1	0	0	6
at Illinois		18	2-6	.333	2-6	.333	0-0	.000	0	0	0	0	1	2	0	2	6
CHATTANOOGA		9	0-2	.000	0-2	.000	0-0	.000	0	0	0	1	1	1	0	1	0
at Miami (OH)		14	2-6	.333	1-3	.333	0-0	.000	1	0	1	1	0	2	0	3	5
at Morehead State		13	0-3	.000	0-2	.000	0-0	.000	1	1	2	0	0	1	0	0	0
at Louisville																	
PIKEVILLE																	
at Appalachian State																	
CUMBERLANDS																	
CENTRAL ARKANSAS*																	
at Bellarmine*																	
at North Alabama*																	
JACKSONVILLE STATE*																	
LIPSCOMB*																	
NORTH FLORIDA*																	
at Florida Gulf Coast*																	
at Stetson*																	
KENNESAW STATE*																	
LIBERTY*																	
at Jacksonville*																	
at Lipscomb*																	
NORTH ALABAMA*																	
at Central Arkansas*																	
at Jacksonville State*																	
BELLARMINE*																	



10

**GEORGIA BALDWIN**

Guard/Forward • 6-0 • R-Freshman

Melbourne, Australia. • Box Hill Senior Secondary Academy

## The Baldwin File

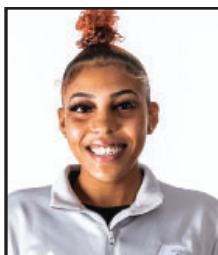
Majoring in Excercise Science

## Season and Career Highs

Season	Min	EKU Career
2, at Morehead State, 12/15/21	<b>FG</b>	9, at UT Martin, 2/20/21
	<b>FGA</b>	2, at UT Martin, 2/20/21
	<b>3FG</b>	5, vs UT Martin, 1/21/21
	<b>3FGA</b>	2, vs UT Martin, 1/21/21
	<b>FT</b>	1, at SIUE, 1/14/21
2, at Morehead State, 12/15/21	<b>FTA</b>	2, two times
	<b>OReb</b>	2, at UT Martin, 2/20/21
1, at Morehead State, 12/15/21	<b>DReb</b>	2, at UT Martin, 2/20/21
1, at Morehead State, 12/15/21	<b>Reb</b>	4, at UT Martin, 2/20/21
	<b>Asst</b>	1, at UT Martin, 2/20/21
	<b>Blocks</b>	
	<b>Steals</b>	1, at UT Martin, 2/20/21
	<b>Points</b>	4, at UT Martin, 2/20/21

## Game-by-Game Statistics

Opponent	GS	Min	FG-A	Pct.	3FG-A	Pct.	FT-A	Pct.	Off	Def	Tot	PF	A	TO	Blk	S	Pts
TRANSYLVANIA																	
at Northern Kentucky																	
at Evansville																	
UNION																	
XAVIER																	
at Illinois																	
CHATTANOOGA																	
at Miami (OH)																	
at Morehead State	2	0-0	.000	0-0	.000	0-2	.000	0	1	1	0	0	0	0	0	0	
at Louisville																	
PIKEVILLE																	
at Appalachian State																	
CUMBERLANDS																	
CENTRAL ARKANSAS*																	
at Bellarmine*																	
at North Alabama*																	
JACKSONVILLE STATE*																	
LIPSCOMB*																	
NORTH FLORIDA*																	
at Florida Gulf Coast*																	
at Stetson*																	
KENNESAW STATE*																	
LIBERTY*																	
at Jacksonville*																	
at Lipscomb*																	
NORTH ALABAMA*																	
at Central Arkansas*																	
at Jacksonville State*																	
BELLARMINE*																	



11

**ARIEL KIRKWOOD**

Guard/Forward • 6-0 • R-Sophomore

Milwaukee, Wis. • Morehead State

## The Kirkwood File

Majoring in

## Season and Career Highs

Season	Min	EKU Career
32, at Morehead State, 12/15/21	7, at Northern Kentucky, 11/14/21	32, at Morehead State, 12/15/21
7, at Northern Kentucky, 11/14/21	13, at Northern Kentucky, 11/14/21	7, at Northern Kentucky, 11/14/21
13, at Northern Kentucky, 11/14/21	1, two times	13, at Northern Kentucky, 11/14/21
1, two times	2, three times	1, two times
2, three times	4, two times	2, three times
4, two times	7, at Northern Kentucky, 11/14/21	4, two times
7, at Northern Kentucky, 11/14/21	6, vs Transylvania, 11/11/21	7, at Northern Kentucky, 11/14/21
6, vs Transylvania, 11/11/21	9, vs Transylvania, 11/11/21	6, vs Transylvania, 11/11/21
9, vs Transylvania, 11/11/21	15, vs Transylvania, 11/11/21	9, vs Transylvania, 11/11/21
15, vs Transylvania, 11/11/21	4, two times	15, vs Transylvania, 11/11/21
4, two times	8, vs Transylvania, 11/11/21	4, two times
8, vs Transylvania, 11/11/21	5, two times	8, vs Transylvania, 11/11/21
5, two times	18, at Northern Kentucky, 11/14/21	5, two times
18, at Northern Kentucky, 11/14/21		18, at Northern Kentucky, 11/14/21

## IMMEDIATE IMPACT

Ariel Kirkwood made an immediate impact in her first game as a Colonel doing a little bit of everything posting eight points, 14 rebounds, eight blocks and two steals.

## CLEANING THE GLASS

Ariel Kirkwood posted a game-best 14 rebounds against Transylvania. Including six offensive rebounds.

## Game-by-Game Statistics

Opponent	GS	Min	FG-A	Pct.	3FG-A	Pct.	FT-A	Pct.	Off	Def	Tot	PF	A	TO	Blk	S	Pts
TRANSYLVANIA	*	23	3-11	.272	0-1	.000	2-2	1.000	6	9	15	4	2	0	8	1	8
at Northern Kentucky	*	29	7-13	.538	0-2	.000	4-7	.571	2	4	6	3	1	3	1	0	18
at Evansville	*	28	4-8	.500	0-0	.000	1-2	.5000	5	5	10	4	4	8	2	1	9
UNION	*	20	5-8	.625	0-1	.000	0-0	.000	4	3	7	1	2	1	3	5	10
XAVIER	*	26	2-9	.222	0-2	.000	4-4	1.000	1	1	2	5	2	3	1	2	8
at Illinois	*	27	3-8	.375	1-1	1.000	3-5	.600	4	3	7	4	4	5	0	5	10
CHATTANOOGA	*	22	1-3	.333	0-1	.000	0-0	.000	3	1	4	0	2	4	2	2	2
at Miami (OH)	*	25	1-4	.250	0-0	.000	1-2	.500	3	5	8	3	2	6	1	1	3
at Morehead State	*	32	5-9	.555	1-2	.500	0-0	.000	5	7	12	3	1	2	0	4	11
at Louisville																	
PIKEVILLE																	
at Appalachian State																	
CUMBERLANDS																	
CENTRAL ARKANSAS*																	
at Bellarmine*																	
at North Alabama*																	
JACKSONVILLE STATE*																	
LIPSCOMB*																	
NORTH FLORIDA*																	
at Florida Gulf Coast*																	
at Stetson*																	
KENNESAW STATE*																	
LIBERTY*																	
at Jacksonville*																	
at Lipscomb*																	
NORTH ALABAMA*																	
at Central Arkansas*																	
at Jacksonville State*																	
BELLARMINE*																	



13

**EBONY SIMIONOVICH**

Forward • 5-11 • Freshman

Lavon, Israel • Israeli National Team

The Simionovich File

Majoring in Forensic Science

## Season and Career Highs

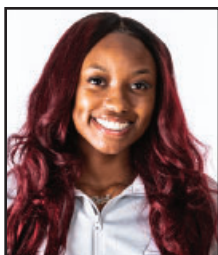
SeasonEKU Career

Min  
FG  
FGA  
3FG  
3FGA  
FT  
FTA  
OReb  
DReb  
Reb  
Asst  
Blocks  
Steals  
Points

## Game-by-Game Statistics

Opponent	GS	Min	FG-A	Pct.	3FG-A	Pct.	FT-A	Pct.	Off	Def	Tot	PF	A	TO	Blk	S	Pts
TRANSYLVANIA																	Did Not Play
at Northern Kentucky																	Did Not Play
at Evansville																	Did Not Play
UNION																	Did Not Play
XAVIER																	Did Not Play
at Illinois																	Did Not Play
CHATTANOOGA																	Did Not Play
at Miami (OH)																	Did Not Play
at Morehead State																	Did Not Play
at Louisville																	
PIKEVILLE																	
at Appalachian State																	
CUMBERLANDS																	
CENTRAL ARKANSAS*																	
at Bellarmine*																	
at North Alabama*																	
JACKSONVILLE STATE*																	
LIPSCOMB*																	
NORTH FLORIDA*																	
at Florida Gulf Coast*																	
at Stetson*																	
KENNESAW STATE*																	
LIBERTY*																	
at Jacksonville*																	
at Lipscomb*																	
NORTH ALABAMA*																	
at Central Arkansas*																	
at Jacksonville State*																	
BELLARMINE*																	





15

**BRIA BASS**

Guard/Forward • 5-11 • Graduate Student

Tucker, Ga. • Tucker HS

## The Bass File

Pursuing a masters in Public Health

## Season and Career Highs

Season	Min	EKU Career
31, two times	<b>FG</b>	45, vs. Kent State, 12/05/17
4, at Miami (OH), 12/12/21	<b>FGA</b>	9, two times
8, two times	<b>3FG</b>	17, vs. Tennessee Tech, 1/26/19
1, at Evansville, 11/17/21	<b>3FGA</b>	5, two times
4, at Illinois, 12/5/21	<b>FT</b>	11, two times
4, two times	<b>FTA</b>	8, at Morehead State, 2/13/20
6, at Northern Kentucky, 11/14/21	<b>OREb</b>	10, at Morehead State, 2/13/20
4, three times	<b>DReb</b>	7, two times
8, at Northern Kentucky, 11/14/21	<b>Reb</b>	13, vs. Morehead St., 2/10/18
11, at Northern Kentucky, 11/14/21	<b>Asst</b>	17, vs. Morehead St., 2/10/18
2, two times	<b>Blocks</b>	7, vs. Brescia, 12/18/18
2, at Morehead State, 12/15/21	<b>Steals</b>	1, eight times
10, vs Transylvania, 11/11/21	<b>Points</b>	4, vs. Morehead State, 2/29/20
		25, two times

## Game-by-Game Statistics

Opponent	GS	Min	FG-A	Pct.	3FG-A	Pct.	FT-A	Pct.	Off	Def	Tot	PF	A	TO	Blk	S	Pts
TRANSYLVANIA	*	25	3-6	.500	0-1	.000	4-5	.800	4	4	8	3	0	4	0	0	10
at Northern Kentucky	*	31	2-6	.333	0-0	.000	3-6	.5000	3	8	11	2	0	4	0	1	7
at Evansville	*	31	1-6	.167	1-3	.333	0-0	.000	4	4	8	2	1	2	0	0	3
UNION	*	17	3-5	.600	0-1	.000	2-4	.500	2	3	5	0	0	0	0	1	8
XAVIER	*	18	0-1	.000	0-0	.000	0-0	.000	1	0	1	2	0	1	0	1	0
at Illinois	*	28	2-8	.250	0-4	.000	4-4	1.000	4	4	8	3	0	1	0	0	8
CHATTANOOGA	*	19	1-5	.200	0-2	.000	1-2	.500	3	4	7	0	2	0	0	0	3
at Miami (OH)	*	22	4-8	.500	0-1	.000	1-2	.500	0	1	1	0	0	2	0	0	9
at Morehead State	*	24	3-10	.300	0-2	.000	0-0	.000	1	3	4	1	2	2	0	2	6
at Louisville																	
PIKEVILLE																	
at Appalachian State																	
CUMBERLANDS																	
CENTRAL ARKANSAS*																	
at Bellarmine*																	
at North Alabama*																	
JACKSONVILLE STATE*																	
LIPSCOMB*																	
NORTH FLORIDA*																	
at Florida Gulf Coast*																	
at Stetson*																	
KENNESAW STATE*																	
LIBERTY*																	
at Jacksonville*																	
at Lipscomb*																	
NORTH ALABAMA*																	
at Central Arkansas*																	
at Jacksonville State*																	
BELLARMINE*																	



20

EMMA HACKER

Forward • 6-3 • R-Sophomore

Frenchburg, Ky. • Menifee County HS

## The Hacker File

Majoring in biology

## Season and ECU Career Highs

Season	Min	ECU Career
16, vs Transylvania, 11/11/21	FG	33, at Belmont, 2/11/21
4, vs Transylvania, 11/11/21	FGA	7, vs Eastern Illinois, 12/30/20
7, two times	3FG	11, at Belmont, 2/11/21
3, at Morehead State, 12/15/21	3FGA	6, vs Eastern Illinois, 12/30/20
5, vs Xavier, 11/27/21	FT	8, at Belmont, 2/11/21
2, vs Xavier, 11/27/21	FTA	3, three times
2, three times	OReb	6, at Belmont, 2/11/21
1, at Morehead State, 12/15/21	DReb	3, at Tennessee State, 2/13/21
4, vs Chattanooga, 12/9/21	DReb	9, at Tennessee State, 2/13/21
4, vs Chattanooga, 12/9/21	Reb	12, at Tennessee State, 2/13/21
2, two times	Asst	4, vs Murray State, 2/6/21
1, at Northern Kentucky, 11/14/21	Blocks	3, two times
3, vs Union, 11/22/21	Steals	3, two times
9, two times	Points	22, vs Eastern Illinois, 12/30/20

## Game-by-Game Statistics

Opponent	GS	Min	FG-A	Pct.	3FG-A	Pct.	FT-A	Pct.	Off	Def	Tot	PF	A	TO	Blk	S	Pts
TRANSYLVANIA	16	4-7	.571	0-0	.000	1-2	.500	0	1	1	2	2	3	0	1	9	
at Northern Kentucky	13	0-0	.000	0-0	.000	0-0	.000	0	0	0	3	1	0	1	0	0	
at Evansville	9	1-2	.500	0-0	.000	1-2	.500	0	2	2	1	0	2	0	0	3	
UNION	15	2-3	.667	1-2	.500	0-0	.000	0	1	1	2	2	1	0	3	5	
XAVIER	22	2-7	.286	1-5	.200	2-2	1.000	0	3	3	3	0	1	0	1	7	
at Illinois	*	16	0-4	.000	0-1	.000	0-0	.000	0	0	0	0	0	1	0	2	0
CHATTANOOGA	*	24	1-4	.250	0-3	.000	2-2	1.000	0	4	4	2	1	0	0	0	4
at Miami (OH)	*	11	0-1	.000	0-1	.000	0-0	.000	0	2	2	1	0	3	0	1	0
at Morehead State	19	3-5	.600	3-4	.750	0-0	.000	1	1	2	3	0	1	0	0	9	
at Louisville																	
PIKEVILLE																	
at Appalachian State																	
CUMBERLANDS																	
CENTRAL ARKANSAS*																	
at Bellarmine*																	
at North Alabama*																	
JACKSONVILLE STATE*																	
LIPSCOMB*																	
NORTH FLORIDA*																	
at Florida Gulf Coast*																	
at Stetson*																	
KENNESAW STATE*																	
LIBERTY*																	
at Jacksonville*																	
at Lipscomb*																	
NORTH ALABAMA*																	
at Central Arkansas*																	
at Jacksonville State*																	
BELLARMINE*																	



21

**ANYSA JORDAN****Forward • 6-1 • R-Sophomore****Fairmont, W.Va. • Fairmont Senior HS**

The Jordan File

Majoring in Criminal Justice

## Season and Career Highs

Season	Min	EKU Career
6, vs Union, 11/22/21	<b>FG</b>	30, vs Jacksonville State, 1/7/21
1, vs Union, 11/22/21	<b>FGA</b>	8, vs. Alice Lloyd, 11/27/19
1, vs Union, 11/22/21	<b>3FG</b>	13, vs Murray State, 2/6/21
	<b>3FGA</b>	1, seven times
	<b>FT</b>	4, at Memphis, 11/9/19
1, vs Union, 11/22/21	<b>FTA</b>	5, vs Eastern Illinois, 12/30/20
1, vs Union, 11/22/21	<b>OReb</b>	6, two times
	<b>DReb</b>	7, vs TTU, 01/02/20
1, vs Union, 11/22/21	<b>Reb</b>	6, two times
1, vs Union, 11/22/21	<b>Asst</b>	10, at Morehead State, 2/13/20
	<b>Blocks</b>	3, at SIUE, 1/14/21
3, vs Union, 11/22/21	<b>Steals</b>	3, vs Union, 11/22/21
2, vs Union, 11/22/21	<b>Points</b>	2, four times
3, vs Union, 11/22/21		18, vs Eastern Illinois, 12/30/20

## Game-by-Game Statistics

Opponent	GS	Min	FG-A	Pct.	3FG-A	Pct.	FT-A	Pct.	Off	Def	Tot	PF	A	TO	Blk	S	Pts
TRANSYLVANIA																	
at Northern Kentucky																	
at Evansville																	
UNION	6	1-1	1.000	0-0	.000	1-1	1.000	0	1	1	1	0	1	3	2	3	
XAVIER																	
at Illinois																	
CHATTANOOGA																	
at Miami (OH)																	
at Morehead State																	
at Louisville																	
PIKEVILLE																	
at Appalachian State																	
CUMBERLANDS																	
CENTRAL ARKANSAS*																	
at Bellarmine*																	
at North Alabama*																	
JACKSONVILLE STATE*																	
LIPSCOMB*																	
NORTH FLORIDA*																	
at Florida Gulf Coast*																	
at Stetson*																	
KENNESAW STATE*																	
LIBERTY*																	
at Jacksonville*																	
at Lipscomb*																	
NORTH ALABAMA*																	
at Central Arkansas*																	
at Jacksonville State*																	
BELLARMINE*																	



22

**KALISSA LACY****Guard • 5-9 • Freshman****Charleston, W.Va. • George Washington HS****The Lacy File**

Majoring in Physical Therapy

**OFF THE BENCH**

Kalissa Lacy posted 10 points off the bench knocking down two three-pointers.

**Season and Career Highs**

<b>Season</b>	<b>Min</b>	<b>Career</b>
19, vs Xavier, 11/27/21	<b>FG</b>	19, vs Xavier, 11/27/21
4, vs Transylvania, 11/11/21	<b>FGA</b>	4, vs Transylvania, 11/11/21
11, two times	<b>3FG</b>	11, two times
2, three times	<b>3FGA</b>	2, three times
9, vs Transylvania, 11/11/21	<b>FT</b>	9, vs Transylvania, 11/11/21
2, vs Union, 11/22/21	<b>FTA</b>	2, vs Union, 11/22/21
2, vs Union, 11/22/21	<b>OReb</b>	2, vs Union, 11/22/21
4, vs Xavier, 11/27/21	<b>DReb</b>	4, vs Xavier, 11/27/21
1, three times	<b>Reb</b>	1, three times
4, vs Xavier, 11/27/21	<b>Asst</b>	4, vs Xavier, 11/27/21
2, two times	<b>Blocks</b>	2, two times
2, vs Chattanooga, 12/9/21	<b>Steals</b>	2, vs Chattanooga, 12/9/21
10, vs Transylvania, 11/11/21	<b>Points</b>	10, vs Transylvania, 11/11/21

**Game-by-Game Statistics**

Opponent	GS	Min	FG-A	Pct.	3FG-A	Pct.	FT-A	Pct.	Off	Def	Tot	PF	A	TO	Blk	S	Pts
TRANSYLVANIA	13	4-11	.364	2-9	.222	0-0	.000	1	1	2	1	2	0	0	0	10	
at Northern Kentucky	16	1-5	.200	1-4	.250	0-0	.000	0	1	1	2	0	3	0	1	3	
at Evansville	8	1-6	.167	1-6	.167	0-0	.000	0	0	0	0	1	0	0	1	3	
UNION	14	2-7	.286	0-4	.000	2-2	1.000	0	1	1	0	2	0	0	1	6	
XAVIER	19	3-11	.273	2-7	.286	0-0	.000	4	0	4	3	2	0	0	0	8	
at Illinois	10	2-7	.286	2-6	.333	0-0	.000	0	0	0	0	0	1	0	1	6	
CHATTANOOGA	7	0-3	.000	0-3	.000	0-0	.000	0	0	0	1	0	1	0	2	0	
at Miami (OH)	3	0-0	.000	0-0	.000	0-0	.000	0	0	0	1	0	0	0	0	0	
at Morehead State	5	0-2	.000	0-2	.000	0-0	.000	0	0	0	0	0	1	0	1	0	
at Louisville																	
PIKEVILLE																	
at Appalachian State																	
CUMBERLANDS																	
CENTRAL ARKANSAS*																	
at Bellarmine*																	
at North Alabama*																	
JACKSONVILLE STATE*																	
LIPSCOMB*																	
NORTH FLORIDA*																	
at Florida Gulf Coast*																	
at Stetson*																	
KENNESAW STATE*																	
LIBERTY*																	
at Jacksonville*																	
at Lipscomb*																	
NORTH ALABAMA*																	
at Central Arkansas*																	
at Jacksonville State*																	
BELLARMINE*																	



30

ALICE RECANATI

G • 5-9 • R-Freshman

Bergamo, Italy • Team 88 Villasanta

## The Recanati File

Majoring in Chemistry

## Season and Career Highs

Season	Min	Career
35, vs Xavier, 11/27/21	FG	40, vs Tennessee Tech, 1/9/21
9, vs Union, 11/22/21	FGA	9, vs Union, 11/22/21
15, vs Chattanooga, 12/9/21	3FG	15, vs Chattanooga, 12/9/21
3, vs Chattanooga, 12/9/21	3FGA	3, two times
3, vs Chattanooga, 12/9/21	FT	4, two times
5, at Illinois, 12/5/21	FTA	8, at Southeast Missouri, 2/18/21
6, at Illinois, 12/5/21	OREb	11, at Southeast Missouri, 2/18/21
4, at Morehead State, 12/15/21	DREb	5, vs Morehead State, 12/14/20
5, two times	REb	6, at Tennessee Tech, 1/28/21
6, three times	ASst	9, two times
7, two times	BLOCKS	8, at Southeast Missouri, 2/18/21
	STEALS	2, two times
6, vs Xavier, 11/27/21	POINTS	6, vs Xavier, 11/27/21
20, vs Chattanooga, 12/9/21		22, at Tennessee Tech, 1/28/21

## Game-by-Game Statistics

Opponent	GS	Min	FG-A	Pct.	3FG-A	Pct.	FT-A	Pct.	Off	Def	Tot	PF	A	TO	Blk	S	Pts
TRANSYLVANIA	*	34	2-5	.400	1-2	.500	0-0	.000	1	5	6	3	5	2	0	3	5
at Northern Kentucky	*	30	3-9	.333	0-0	.000	2-2	1.000	0	0	0	0	1	2	0	2	8
at Evansville	*	21	0-3	.000	0-1	.000	0-0	.000	0	1	1	5	5	1	0	1	0
UNION	*	25	9-11	.818	0-1	.000	1-3	.333	1	5	6	3	5	1	0	5	19
XAVIER	*	35	2-10	.200	0-2	.000	1-2	.500	0	3	3	2	6	5	0	6	5
at Illinois	*	30	0-9	.000	0-2	.000	5-6	.833	1	2	3	0	2	2	0	1	5
CHATTANOOGA	*	31	8-15	.533	3-3	1.000	1-2	.500	0	1	1	3	2	1	0	1	20
at Miami (OH)	*	33	2-8	.250	0-1	.000	2-4	.500	0	1	1	1	7	5	0	1	6
at Morehead State	*	28	1-7	.143	1-4	.250	1-2	.500	4	2	6	1	7	3	0	0	4
at Louisville																	
PIKEVILLE																	
at Appalachian State																	
CUMBERLANDS																	
CENTRAL ARKANSAS*																	
at Bellarmine*																	
at North Alabama*																	
JACKSONVILLE STATE*																	
LIPSCOMB*																	
NORTH FLORIDA*																	
at Florida Gulf Coast*																	
at Stetson*																	
KENNESAW STATE*																	
LIBERTY*																	
at Jacksonville*																	
at Lipscomb*																	
NORTH ALABAMA*																	
at Central Arkansas*																	
at Jacksonville State*																	
BELLARMINE*																	

## SEASON BEST

Alice Recanati was stellar in the game against Chattanooga on Dec. 9 posting a season-best 20 points while shooting 8-for-15 from the field.

## A LITTLE BIT OF EVERYTHING

Alice Recanati filled the stat sheet against Union, posting 19 points, six rebounds, five assists, and five steals.

## BALANCED STAT LINE

Alice Recanati was solid in the season opener against Transylvania posting, five points, six rebounds and five assists.



35

I'LIYAH GREEN

Center • 6-2 • Graduate Student

Louisville, Ky. • Cincinnati

## The Green File

Pursuing a masters in Sport Administration

## GOOD TO BE BACK

In her first game in over a year, I'Liyah Green posting five points and seven rebounds in the win against Transylvania (Nov. 11).

## Season and Career Highs

Season	Min	EKU Career
22, at Morehead State, 12/15/21	FG	45, at Tennessee Tech, 1/25/20
5, at Morehead State, 12/15/21	FGA	7, two times
10, vs Transylvania, 11/11/21	3FG	16, vs. SEMO, 2/1/20
	3FGA	1, four times
1, vs Transylvania, 11/11/21	FT	4, vs. Eastern Illinois, 1/9/20
3, vs Chattanooga, 12/9/21	FTA	5, at Eastern Illinois, 2/6/20
4, vs Chattanooga, 12/9/21	OReb	8, at Austin Peay, 2/15/20
7, vs Transylvania, 11/11/21	DReb	6, two times
4, at Northern Kentucky, 11/14/21	Reb	12, vs. Chattanooga, 12/1/19
8, vs Transylvania, 11/11/21	Asst	15, vs. Eastern Illinois, 1/9/20
3, vs Transylvania, 11/11/21	Blocks	3, three times
1, two times	Steals	7, at Xavier, 12/8/19
2, at Morehead State, 12/15/21	Points	4, vs Tennessee State, 2/20/20
10, at Morehead State, 12/15/21		17, vs. SEMO, 2/1/20

## Game-by-Game Statistics

Opponent	GS	Min	FG-A	Pct.	3FG-A	Pct.	FT-A	Pct.	Off	Def	Tot	PF	A	TO	Blk	S	Pts
TRANSYLVANIA	14	2-10	.200	0-0	.000	1-2	.500	7	1	8	1	3	0	1	0	5	
at Northern Kentucky	12	2-5	.400	0-0	.000	0-0	.000	1	4	5	1	0	1	1	0	4	
at Evansville	10	1-4	.250	0-0	.000	0-0	.000	1	3	4	1	0	0	0	0	2	
UNION	11	1-4	.250	0-0	.000	0-0	.000	1	1	2	0	0	0	0	0	2	
XAVIER	Did Not Play																
at Illinois	7	0-2	.000	0-0	.000	0-0	.000	1	1	2	0	0	0	0	0	0	
CHATTANOOGA	17	1-1	1.000	0-0	.000	3-4	.750	3	2	5	0	1	1	0	0	5	
at Miami (OH)	10	1-2	.500	0-0	.000	0-0	.000	0	1	1	0	0	1	0	0	2	
at Morehead State	22	5-7	.714	0-0	.000	0-0	.000	2	2	4	1	0	2	0	2	10	
at Louisville																	
PIKEVILLE																	
at Appalachian State																	
CUMBERLANDS																	
CENTRAL ARKANSAS*																	
at Bellarmine*																	
at North Alabama*																	
JACKSONVILLE STATE*																	
LIPSCOMB*																	
NORTH FLORIDA*																	
at Florida Gulf Coast*																	
at Stetson*																	
KENNESAW STATE*																	
LIBERTY*																	
at Jacksonville*																	
at Lipscomb*																	
NORTH ALABAMA*																	
at Central Arkansas*																	
at Jacksonville State*																	
BELLARMINE*																	



53

**BRIDGID FOX****Forward • 6-0 • R-Sophomore****Altoona, Pa. • Detroit Mercy****The Fox File**

Majoring in Biology Pre PA

**Season and Career Highs**

<b>Season</b>	<b>EKU Career</b>
25, at Miami (OH), 12/12/21	25, at Miami (OH), 12/12/21
4, vs Union, 11/22/21	4, vs Union, 11/22/21
6, at Miami (OH), 12/12/21	6, at Miami (OH), 12/12/21
	<b>Min</b>
	<b>FG</b>
	<b>FGA</b>
	<b>3FG</b>
	<b>3FGA</b>
	<b>FT</b>
5, at Miami (OH), 12/12/21	5, at Miami (OH), 12/12/21
5, at Miami (OH), 12/12/21	5, at Miami (OH), 12/12/21
3, two times	3, two times
6, at Miami (OH), 12/12/21	6, at Miami (OH), 12/12/21
7, at Miami, 12/12/21	7, at Miami, 12/12/21
1, two times	1, two times
1, vs Union, 11/22/21	1, vs Union, 11/22/21
1, at Illinois, 12/5/21	1, at Illinois, 12/5/21
12, vs Union, 11/22/21	12, vs Union, 11/22/21
	<b>Blocks</b>
	<b>Steals</b>
	<b>Points</b>

**SPARK PLUG**

Bridgid Fox again was solid off the bench posting 11 points and grabbing seven rebounds against Miami (OH) on Dec. 12.

**PERFECT FROM THE FIELD**

Bridgid Fox has posted three-straight games shooting perfect from the field.

**OFF THE BENCH**

Bridgid Fox was solid off the bench scoring eight points and pulling down five rebounds against Evansville.

**Game-by-Game Statistics**

<b>Opponent</b>	<b>GS</b>	<b>Min</b>	<b>FG-A</b>	<b>Pct.</b>	<b>3FG-A</b>	<b>Pct.</b>	<b>FT-A</b>	<b>Pct.</b>	<b>Off</b>	<b>Def</b>	<b>Tot</b>	<b>PF</b>	<b>A</b>	<b>TO</b>	<b>Blk</b>	<b>S</b>	<b>Pts</b>
TRANSYLVANIA	8	1-3	.333	0-0	.000	0-0	.000	1	0	1	0	0	0	1	0	2	
at Northern Kentucky	10	1-1	1.000	0-0	.000	1-4	.250	0	3	3	2	0	0	0	0	3	
at Evansville	15	3-3	1.000	0-0	.000	2-2	1.000	3	2	5	3	0	1	0	0	8	
UNION	16	4-4	1.000	0-0	.000	4-4	1.000	0	1	1	2	1	0	0	0	12	
XAVIER	20	3-4	.750	0-0	.000	3-3	1.000	3	1	4	0	0	1	0	0	9	
at Illinois	18	1-4	.250	0-0	.000	0-0	.000	2	1	3	2	1	2	0	1	2	
CHATTANOOGA	11	1-3	.333	0-0	.000	2-2	1.000	2	2	4	1	0	1	0	0	4	
at Miami (OH)	25	3-6	.5000	0-0	.000	5-5	1.000	1	6	7	2	1	2	0	0	11	
at Morehead State																	Did Not Play
at Louisville																	
PIKEVILLE																	
at Appalachian State																	
CUMBERLANDS																	
CENTRAL ARKANSAS*																	
at Bellarmine*																	
at North Alabama*																	
JACKSONVILLE STATE*																	
LIPSCOMB*																	
NORTH FLORIDA*																	
at Florida Gulf Coast*																	
at Stetson*																	
KENNESAW STATE*																	
LIBERTY*																	
at Jacksonville*																	
at Lipscomb*																	
NORTH ALABAMA*																	
at Central Arkansas*																	
at Jacksonville State*																	
BELLARMINE*																	





### The Greg Todd File

**Full Name** Greg Todd  
**Birthplace** Berea, Ky.  
**Hometown** Berea, Ky.  
**High School** Berea HS  
**College** Eastern Kentucky University, 1983

#### Coaching Experience

**Berea High School** 1992-99  
 Head Coach  
**Lexington Catholic** 1999-06  
 Head Coach  
**Transylvania University** 2006-14  
 Head Coach  
**Morehead State University** 2014-21  
 Head Coach  
**Eastern Kentucky University** 2021-Current  
 Head Coach

#### Accomplishments

##### *As a coach*

- Three NCAA Tournament appearances
- Four Conference Championships
- Two WNIT appearances
- 15 years of coaching basketball at the college level

Eastern Kentucky University alum Greg Todd was named the new women's basketball head coach at ECU on May 10, 2021.

Todd, a Madison County native, who has spent his entire head coaching career inside the Commonwealth of Kentucky, is the 10th head coach in program history.

Todd most recently served as the women's basketball head coach at Morehead State University for seven years. He led the Eagles to three straight 20-plus win seasons from 2016 to 2019 with two WNIT appearances. During the 2018-19 season, his team advanced to the second round of the WNIT after upsetting Big Ten foe Ohio State in the first round.

"As we set out to hire the next head women's basketball coach to elevate our program, we were pleased with the interest in our position and the opportunity that lies ahead of us. At every step in our process, Greg Todd rose to the top as the ideal coach to lead us at this exciting time," Vice President and Director of Athletics Matt Roan said. "He's a coach who has dedicated his entire coaching career to women's basketball, has experienced amazing success with each program he's led, has a wealth of experience and understands the landscape, and knows our state incredibly well. His love for his alma mater and desire to build a championship-contending program here are unmatched. He comes highly recommended from all corners of Kentucky and beyond, and those folks speak not only to his ability as a coach, but also to his quality as an individual. He's tested and proven, and we're excited to have him in charge of the Colonels and leading us to victories!"

The success between 2016 and 2019 marked the first time in program history that Morehead State had three straight 20-win seasons. The Eagles' 36 Ohio Valley Conference victories during that time is also the most-ever during any three-year period.

Todd recruited two top-50 nationally ranked players, the highest rated recruits in Morehead State history. He also recruited the junior college national player of the year. Under Todd's guidance, the Eagles' had a team grade-point-average of 3.0 or better each of the past six years.

"It's a great time to be a Colonel under the leadership of Athletics Director Matt Roan and President David McFaddin, and to build the women's basketball program at ECU," Todd said.

From 2006 to 2014, Todd was the head coach at Transylvania University where he led the team to four conference championships and three NCAA tournament appearances. In the 2009 season at Transylvania, Todd led the

team to a regular season and conference tournament title while advancing to the second round of the NCAA Tournament for the first time.

In his eight years at Transylvania he helped produce four Heartland Collegiate Athletic Conference (HCAC) Players of the Year.

During his time as a collegiate coach, Todd has compiled a 261-169 record with four conference championships and five post season appearances.

Before entering collegiate coaching, Todd was one of the most decorated high school coaches in the state of Kentucky. He built a national powerhouse at Lexington Catholic High School from 1999-2006, making five appearances in the state championship game and winning three state titles. Todd won the region championship six of his seven seasons at Lexington Catholic.

Todd's teams finished ranked in the top-10 nationally in 2005 and 2006. His 2005-06 team at Lexington Catholic finished the season ranked No. 3 in the nation by USA Today, which stands as the highest final ranking ever for a boy's or girl's Kentucky team. Todd was named EA Sports National Coach of the Year following that season.

In 2017, Todd was inducted into the Kentucky High School Basketball Hall of Fame.

"Being from Madison County, I am so excited to come home and get the women's basketball program to the top of the ASUN Conference as quickly as possible," said Todd. "I am excited about being able to build a bigger fan base with my local connections around the community."

Todd started his head coaching career at Berea Community High School where in seven seasons he led his team to a 166-54 record and an appearance in the state final four in 1998. Berea won 20 games every year under Todd, despite never winning 20 or more games before in school history. He is a member of the Berea Community High School Hall of Fame as a coach and basketball player.

"I am looking forward to re-recruiting and building a strong relationship with the players already on campus," Todd said.

#### **Record vs. All Opponents**

Chattanooga ..... 1-0  
 Evansville ..... 0-1  
 Illinois ..... 0-1  
 Louisville ..... 0-0  
 Miami (OH) ..... 0-1  
 Morehead State ..... 1-0  
 Northern Kentucky ..... 0-1  
 Transylvania ..... 1-0  
 Union ..... 1-0  
 Xavier ..... 0-1

### When was the last time EKU ...

#### Scored 100 points or more:

Nov. 22, 2021-EKU 120, Union 53

#### Scored less than 50 Points:

Feb. 24, 2021 - APSU 65, EKU 49

#### Allowed 100 points or more:

Nov. 29, 2020 - Louisville 101, EKU 58

#### Held an opponent to less than 50 points:

Dec. 15, 2021 - EKU 66, Morehead State 43

#### Held an opponent to less than 30% shooting:

Nov. 11, 2021 vs Transylvania (17-57) 29%

#### Shot over 65% from the field (45+ attempts):

None

#### Shot over 60% from the field (45+ attempts):

Jan. 25, 2007 -- .600 (33-55) -- vs. Tennessee State

#### Shot over 55% from the field (45+ attempts):

Nov. 22, 2021 -- .590 (46-78) -- vs. Union

#### Shot over 50% from the field (45+ attempts):

Nov. 22, 2021 -- .590 (46-78) -- vs. Union

#### Shot 50% from 3-point range (15+ attempts):

Jan. 16, 2021 -- .500 (8-16) -- at Eastern Illinois

#### Shot over 90% from the FT line (10+ attempts):

Jan 9, 2020 -- .933 (14-15) -- Tennessee Tech

#### Attempted 80 or more shots from the field:

Nov. 25, 2018 - 84 - at Indiana (20-80, 25%)

#### Won an overtime game:

Nov. 24, 2019 - EKU 61, Mercer 60 (OT)

#### Lost an overtime game:

Jan. 25, 2020 - TTU 87, EKU 82 (20T)

#### Played a double overtime game:

Jan. 25, 2020 - TTU 87, EKU 82 (20T)

#### Played a triple overtime game:

Jan. 24, 1998 - EKU 97, Tennessee Tech 92 (30T)

#### Won by 50+ points:

Nov. 22, 2021-EKU 120, Union 53

### When was the last time the Colonels had ...

**A player score 30 points** ..... Jalen O'Bannon (34) vs. Eastern Illinois Jan. 7, 2017 (EKU 88, EIU 85 OT)

**A player score 35 points** ..... Laura Shelton (37) at Austin Peay, Dec. 10, 2005 (EKU 64, APSU 61)

**A player score 40 points** ..... Michaela Hunter (40) vs. Tennessee Tech, Jan. 24, 2015 (EKU 97, TTU 93)

**A player grab 15 rebounds** ..... Ariel Kirkwood (15) vs. Transylvania, Nov. 11, 2021 (EKU 74, Transy 51)

**A player record a double-double** ..... Ariel Kirkwood (11 pts, 12 Rebs) vs. Morehead State, Dec. 15, 2021 (EKU 66, Morehead State 43)

**Two players record a double-double in the same game** ..... Bria Bass (12 pts, 12 rebs) & I'Liyah Green (10 pts, 12 rebs) at. Mercer, Nov. 24, 2019 (EKU 61, Mercer 60)

**A player record a triple-double** ..... no known triple doubles

**A player dish out 10 assists** ..... Teri Goodlett (12) at Tennessee Tech, Jan. 25, 2020 (TTU 87, EKU 82)

**A player block five shots** ..... Ariel Kirkwood (8) vs. Transy, Nov. 11, 2021 (EKU 74, TU 51)

**A player record 10 steals**..... Teresa McNair (11) vs. Jacksonville State, Dec. 30, 2002 (EKU 93, JSU 71)

**Two players score 20 points in a game** ..... Jayla Johnson (25), Kendall Wingler (21) vs Tennessee State, Feb. 27, 2021 (EKU 69, TSU 64)

**Three players score 20 points in a game** ..... Laphelia Doss (23), Chrissy Roberts (23), Marla Gearhart (21) at Marshall, Nov. 14, 1997 (EKU 97, MAR 90 OT)

**Two players grab 10 rebounds in a game** ..... Bria Bass (12), I'Liyah Green (12) at Mercer, Nov. 24, 2019 (EKU 61, Mercer 60)

**Four players score in double figures** .....Kendall Wingler (21) Jayla Johnson (16), Emma Hacker (12), Anya Jordan (11) at Belmont, Feb. 11, 2021 (EKU 74, TSU 62)

**Five players score in double figures** ..... Jayla Johnson (26), Alice Recanati (19), Bridgid Fox (12), Kayra Freeman (11), Ariel Kirkwood (10) vs. Union, Nov. 22, 2021 (EKU 120, SEMO 53)

**Six players score in double figures** ..... Michaela Hunter (23), Shameekia Murray (19), Jalen O'Bannon (18), Miranda Maples (12), Mariah Massengill (12), Alexis Cooper(10) vs. Morehead State, Jan. 30, 2016 (EKU 100, MSU 93 OT)

**A player made 10 field goals** ..... Abby Wright (10) vs. Kentucky Christian, Dec. 5, 2018 (EKU 90, KCU 35)

**A player made five three-point field goals** ..... Emma Hacker (6) vs Eastern Illinois, Dec. 30, 2020 (EKU 80, EIU 69)

**A player made 10 free throws** ..... Jalen O'Bannon (22) vs. Eastern Illinois, Jan. 7, 2017 (EKU 88, EIU, 85 OT)

**A player converted a four-point play** ..... Jayla Johnson (3-pointer followed by one free throw) vs Union, Nov. 22, 2021 (EKU 120, Union 53)

**A player converted a five-point play** ..... Niki Avery (3-pointer followed by two free throws) vs. Penn, Dec. 30, 2007 (EKU 100, Penn 62)

**A player hit a last second shot to win the game** ... Talisha Davis (0:09) vs. Bethune-Cookman, Nov. 28, 2009 (EKU 66, BCU 65) - Illona Muszak (0:01.4) at Tennessee-Martin, Feb. 26, 2009 (EKU 63, UTM 60)



Official Basketball Box Score - Final  
Transylvania at Eastern Kentucky  
11/11/21 McBrayer Arena, Richmond  
2021-22 Women's Basketball

Game TI  
Game D:  
Ate:



Official Basketball Box Score - Final  
Eastern Ky. at Northern Ky.  
11/16/21 Hoot Arena, Highland Heights  
2021-22 Women's Basketball

Game Time: 6:00 PM  
Game Duration: 1:30  
Attendance: 107

Transylvania - 51

Record: 1-0

NO.	Name	Min	FG	3P	FT	Rebounds	Fouls	TP	AS	TO	ST	Blocks	BS	BA	+	-
			M-A	M-A	M-A	OR DR TOT	PF FD									
32	Laken Ball	F 27:53	2-6	0-2	3-4	1 8 9	4 4	7	1	2	2	1	1	1	5	
35	Dasia Thornton	F 26:40	0-5	0-3	0-0	0 3 3	5 2	0	1	3	0	0	0	0	-11	
5	Madison Kellione	G 30:31	4-10	1-3	2-2	1 1 2	1 5	11	1	4	0	0	2	-13		
10	Grace Shope	G 32:12	3-13	3-9	2-2	2 2 4	2 3	11	3	2	0	0	4	-7		
24	Kennedi Stacy	G 30:46	6-18	2-9	0-0	1 0 1	2 3	14	1	6	3	0	1	-16		
22	Samantha Cornelison	12:58	1-5	1-5	2-4	0 2 2	0 2	5	1	0	1	0	1	-15		
15	Sadie Wurth	04:14	0-0	0-0	0-0	0 0 0	0 0	0	0	0	0	0	0	-1		
30	Grace Bringard	11:39	1-1	0-0	0-0	0 9 9	2 0	2	0	4	0	1	0	-1		
33	Kennedy Harris	14:25	0-1	0-1	1-2	0 0 0	0 1	1	0	1	0	0	0	-7		
44	Emilie Teall	04:20	0-0	0-0	0-0	0 0 0	0 0	0	0	0	0	0	0	-8		
11	Maddi Benjamin	02:50	0-0	0-0	0-0	0 0 0	0 0	0	0	1	0	0	0	-7		
21	McLain Murphy	01:32	0-0	0-0	0-0	0 0 0	0 0	0	0	0	0	0	0	-5		
Team						7 2 9	0	0	0	0	0	0	0	0	0	0
Totals			17-59	7-32	10-14	12 27 39	16 20	51	8	23	6	2	10	-23		

Technical Fouls: NONE

Shooting By Period	1st	2nd	3rd	4th	OT
FG%	5.20	3.10	7.15	6.10	6.10
3PT%	0.0	0.0	0.0	0.0	0.0
FT%	0.0	0.0	0.0	0.0	0.0
GM FG%	17.59	7.32	10.14	12.27	39.16
FT%	10.14	6.10	7.32	6.10	6.10

Dead Ball Rebs:

Eastern Kentucky - 74

Record: 1-0

NO.	Name	Min	FG	3P	FT	Rebounds	Fouls	TP	AS	TO	ST	Blocks	BS	BA	+	-
			M-A	M-A	M-A	OR DR TOT	PF FD									
00	Jayla Johnson	F 26:01	4-17	1-2	0-2	2 5 7	2 2	9	2	3	0	0	0	14		
5	Ally Collett	G 23:13	2-9	1-4	0-0	0 0 0	1 0	5	1	0	2	0	1	21		
11	Ariel Kirkwood	G 23:17	3-11	0-1	2-2	6 9 15	4 1	8	2	0	1	8	0	5		
15	Bria Bass	G 24:53	3-6	0-1	4-5	4 4 8	3 6	10	0	4	0	0	0	9		
30	Alice Recanatani	G 30:47	2-5	1-2	0-0	1 5 6	3 1	5	5	2	3	0	0	12		
2	Kayra Freeman	13:58	4-4	0-0	3-3	2 0 2	2 3	11	1	0	4	0	0	18		
20	Emma Hacker	16:03	4-7	0-0	1-2	0 1 1	2 1	9	2	3	1	0	1	14		
22	Kalissa Lacy	13:12	4-11	2-9	0-0	1 1 2	1 0	10	2	0	0	0	0	7		
35	L'Yah Green	13:59	2-10	0-0	1-2	7 1 8	1 1	5	3	0	0	1	0	5		
53	Bridgid Fox	08:27	1-3	0-0	0-0	1 0 1	0 1	2	0	0	0	0	0	3		
3	Brie Crittendon	02:50	0-0	0-0	0-0	0 1 1	1 0	0	1	0	0	1	0	7		
Team						3 4 7	0	0	0	0	0	0	0	0	0	0
Totals			29-83	5-19	11-16	27 31 58	20 16	74	19	12	11	10	2	23		

Technical Fouls: NONE

Shooting By Period	1st	2nd	3rd	4th	OT
FG%	8.20	3.10	7.15	6.10	6.10
3PT%	0.0	0.0	0.0	0.0	0.0
FT%	0.0	0.0	0.0	0.0	0.0
GM FG%	29.83	5.19	11.16	12.27	39.16
FT%	11.16	6.10	7.32	6.10	6.10

Dead Ball Rebs:

TRANSY	EKU
Biggest lead	1 (1st 7:21) 23 (4th 0:27)
Best Scoring Run	6 (1st 3:28) 15 (4th 0:27)
Lead Changes	2
Times Tied	1
Time with Lead	00:17 37:57



Official Basketball Box Score - Final  
Eastern Ky. at Evansville  
11/17/21 Ford Center, Evansville  
2021-22 Women's Basketball

Game Time: 6:00 P  
Game Duration: 2  
Attendance: 6



Official Basketball Box Score - Final  
Union (KY) at Eastern Ky.  
11/22/21 McBrayer Arena, Richmond  
2021-22 Women's Basketball

Game Time: 5:00 PM  
Game Duration: 2:10  
Attendance: 107

Eastern Ky. - 57

Record: 1-2

NO.	Name	Min	FG	3P	FT	Rebounds	Fouls	TP	AS	TO	ST	Blocks	BS	BA	+	-
			M-A	M-A	M-A	OR DR TOT	PF FD									
00	Jayla Johnson	F 22:58	4-19	3-8	3-6	2 4 6	5 4	14	0	6	2	0	1	-2		
5	Ally Collett	G 21:24	0-5	0-3	4-4	0 0 0	2 4	2	3	0	0	0	0	-6		
11	Ariel Kirkwood	G 28:28	4-9	0-0	1-2	5 5 10	4 3	9	4	1	2	1	2	-1		
15	Bria Bass	G 30:46	1-6	1-3	0-0	4 4 8	2 3	3	1	2	0	0	1	-16		
30	Alice Recanatani	G 20:47	0-3	0-1	0-0	0 1 1	5 0	0	5	1	1	0	1	3		
2	Kayra Freeman	25:00	5-7	0-0	1-1	1 2 3	2 4	11	1	3	0	0	0	-17		
20	Emma Hacker	09:02	1-2	0-0	1-2	0 2 2	1 2	3	0	2	0	0	0	-3		
35	L'Yah Green	10:05	1-4	0-0	0-0	1 3 4	1 0	2	0	0	0	0	1	0		
3	Brie Crittendon	06:10	0-2	0-1	0-0	0 1 1	1 0	0	0	1	1	0	0	-3		
22	Kalissa Lacy	07:51	1-6	1-6	0-0	0 0 0	0 0	3	1	0	1	0	0	6		
53	Bridgid Fox	14:48	3-3	0-0	2-2	3 2 5	3 8	0	1	0	0	0	0	-13		
1	Arina Khlopikova	02:41	0-1	0-1	0-0	0 0 0	0 0	0	0	0	0	0	0	3		
Team						3 3 6	0	0	0	0	0	0	0	0	0	0
Totals			20-66	5-23	12-17	19 27 46	26 21	57	14	27	6	2	5	-10		

Technical Fouls: NONE

Shooting By Period	1st	2nd	3rd	4th	OT
FG%	5.13	26.3%	3.10	3.10	3.10
3PT%	1-5	33.3%	0-0	0-0	0-0
FT%	5-6	83.3%	0-0	0-0	0-0
GM FG%	17.59	7.32	10.14	12.27	39.16
FT%	10.14	6.10	7.32	6.10	6.10

Dead Ball Rebs: 3

Evansville - 67

Record: 3-0

NO.	Name	Min	FG	3P	FT	Rebounds	Fouls	TP	AS	TO	ST	Blocks	BS	BA	+	-
			M-A	M-A	M-A	OR DR TOT	PF FD									
12	Celine Dupont	F 07:52	0-3	0-0	0-0	2 1 3	1 0	0	0	2	0	0	1	-1		
14	Abby Feit	F 36:43	8-11	2-4	0-1	0 3 3	3 2	18	2	3	2	0	0	7		
3	Gala Camarena	G 07:28	0-1	0-1	2-2	0 1 1	0 2	2	1	0	0	0	0	1		
11	Elly Morgan	G 29:07	3-8	1-4	0-0	1 1 2	4 3	7	2	5	1	0	0	10		
32	Myia Clark	G 30:19	3-9	1-4	0-0	0 3 3	4 1	7	4	3	2	0	0	13		
13	Kodie Myszk	18:12	1-2	0-0	4-2	4 3 7	3 1	3	0	2	0	2	1	8		
21	Al'Nah Griffin	20:25	6-15	1-6	1-4	0 2 2	3 3	14	0	3	3	1	0	-4		
22	Jossie Hudson	03:29	0-1	0-1	0-0	1 1 2	1 0	0	0	1	1	0	0	-14		
1	Anna Newman	29:12	3-4	1-1	6-6	2 3 5	2 10	13	5	3	4	0	0	-4		
2	NaTaya Pardee	17:13	1-2	0-0	1-4	1 5 6	0 4	3	1	0	0	2	0	9		
Team						0 6 6	0	0	0	0	0	0	0	0	0	0
Totals			25-56	6-21	11-23	11 29 40	21 26	67	15	23	13	5	2	10		

Technical Fouls: NONE

Shooting By Period	1st	2nd	3rd	4th	OT
FG%	5.13	26.3%	3.10	3.10	3.10
3PT%	1-5	33.3%	0-0	0-0	0-0
FT%	5-6	83.3%	0-0	0-0	0-0
GM FG%	17.59	7.32	10.14	12.27	39.16
FT%	10.14	6.10	7.32	6.10	6.10

Dead Ball Rebs: 5

EKU	EVA
Biggest lead	8 (2nd 7:45) 16 (4th 1:22)
Best Scoring Run	9 (1st 1:18) 7 (3rd 0:10)
Lead Changes	4
Times Tied	4
Time with Lead	09:57 27:13

Union (KY) - 53

Record: 0-0

Shooting By Period														
NO.	Name	Min	FG M-A	3P M-A	FT M-A	Rebounds OR DR TOT	Fouls PF FD	TP	AS	TO	ST	Blocks BS BA	4/-	
21	Brooke Hammonds	F 24:12	5-13	0-2	6-6	5 7 12	3 4	16	4	6	0	0	0	-24
32	McKenzie Himes	C 14:48	6-9	0-0	0-0	2 0 2	4 1	12	1	0	0	1	1	-19
2	Lekisa Linton	G 25:23	0-7	0-2	0-0	5 6 11	1 2	0	3	5	1	0	0	-24
5	Shelby Newland	G 25:57	2-6	0-2	2-2	1 1 2	2 3	6	0	4	2	0	0	-28
22	Gracie Jervis	G 26:16	1-7	0-0	0-0	1 1 2	4 0	3	1	5	0	0	0	-36
33	Raigan King	15:32	1-2	0-0	1-3	2 1 3	4 2	3	0	2	2	1	0	-21
20	Abbagail Smith	06:23	0-2	0-0	0-0	0 0 0	0 0	0	1	2	0	0	1	-8
33	Savannah Fox	06:08	0-0	0-0	0-0	0 0 0	0 0	0	0	0	0	0	0	-16
31	Isabel Brock	11:35	0-0	0-0	0-0	0 0 0	0 0	0	0	1	0	1	0	-31
4	Clara Uphoff	05:52	0-0	0-0	0-0	0 0 0	0 0	0	1	3	0	0	0	-21
15	Madison Cox	05:52	2-5	1-4	0-0	0 1 1	0 0	5	0	1	0	1	0	-17
14	Brittany Davis	09:40	1-3	1-2	2-2	0 0 0	1 2	5	0	6	0	0	0	-17
24	Jayden Crist	04:46	0-1	0-0	0-0	0 0 0	5 1	0	0	2	0	0	0	-13
10	Madison Taylor	05:52	0-0	0-0	0-0	0 0 0	1 1	0	1	1	0	0	0	-13
25	Morgan Blackley	05:52	0-1	0-0	0-0	0 0 0	1 1	0	0	0	1	0	0	-18
30	Alexis Wolf	05:52	1-2	1-1	0-0	0 0 0	0 0	0	3	0	1	0	0	-14
Team						2 2 4	0	28	53	12	39	6	3	-67
Totals			19-60	4-23	11-13	17 19 36	28 17	53	12	39	6	3	7	-67

Game Time: 2:00 PM  
Game Duration: 1:59  
Attendance: 1,227

**Officials:** Tim Daly, Kalei Enterline, Adrienne Gilmore

Javier - 73		RecoR: 3P													Shooting By P							
NO.	Name	Min	FG		3P		FT		Rebounds		Fouls		TP	AS	TO	ST	Blocks		+/-	1 <sup>st</sup> FG%	9-18	
			M-A	M-A	M-A	M-A	OR	DR	PF	FD	BS	BA										
44	Ayanna Townsend	F 25:46	6-12	0-0	2-2	4	2	6	5	1	14	0	1	1	1	0	21			3PT%	0-4	
1	Nia Clark	G 38:46	9-16	0-5	4-4	1	2	3	4	22	4	8	3	1	1	0	23			FT%	4-4	
10	Shaila Beeler	G 25:06	0-2	0-0	5-6	1	4	5	2	3	5	2	1	1	1	0	23			2 <sup>nd</sup> FG%	4-11	
21	Kaeleynn Satterfield	G 32:25	4-8	0-2	5-6	3	5	8	4	13	3	4	3	0	0	12			3PT%	0-6		
23	Aanya Harris	G 31:59	4-5	0-1	4-4	1	4	5	2	7	12	3	0	2	1	0	1			FT%	2-2	
2	Mikayla Hayes	10:35	1-3	0-0	0-0	0	2	2	3	0	2	0	1	0	0	1	3			3 <sup>rd</sup> FG%	5-15	
15	Mackayla Scarlett	19:10	1-6	0-4	1-1	0	1	1	2	1	2	1	3	1	4	0	0	2			3PT%	0-4
30	Courtney Prenger	11:14	1-1	0-0	0-0	1	1	2	2	0	2	0	0	1	0	0	-10			FT%	6-6	
12	Kaysia Woods	04:59	0-2	0-2	0-0	0	2	2	1	0	0	0	0	0	1	0	0	0			4 <sup>th</sup> FG%	8-11
Team						1	4	5		0	0									3PT%	0-1	
Totals			26-55	0-14	21-23	12	27	39	22	20	73	13	20	12	4	1	13			FT%	9-11	
Technical Fouls:Satterfield 3 <sup>rd</sup> 8:56																						
GM FG%: 26:55																						
3PT%: 0-14																						
FT%: 21-21																						

Eastern Ky. - 60			Record: 3-3													Shooting By Team				
NO.	Name	Min	FG		3P		FT		Rebounds		Fouls		TP	AS	TO	ST	Blocks		+/-	
			M-A	M-A	M-A	M-A	OR	DR	OT	PF	FD	BS					BA			
00	Jayla Johnson	F	24:55	5-13	0-3	7-8	2	5	7	4	7	17	0	4	2	0	0	0	3	1 <sup>st</sup> FG% 6:18
5	Ally Collett	G	18:19	2-5	1-2	1-2	0	1	1	0	6	0	1	0	0	0	0	0	3PT% 2:21	
11	Ariel Kirkwood	G	26:29	2-9	0-2	4-4	1	1	2	5	8	2	3	0	2	1	1	2	FT% 2:22	
15	Bria Bass	G	18:19	0-1	0-0	0-0	1	0	1	2	0	0	0	1	1	0	0	0	2 <sup>nd</sup> FG% 5:16	
30	Alice Recanatani	G	35:16	2-10	0-2	1-2	0	3	3	2	3	5	6	5	6	2	0	10	3PT% 1:5	
2	Kayra Freeman	N	11:19	0-0	0-0	0-0	0	1	1	2	0	0	1	2	0	0	0	0	FT% 5:6	
3	Brie Crittendon	04:07	0-0	0-0	0-2	1	1	2	0	1	0	0	0	0	0	0	0	0	1 <sup>st</sup> FG% 4:15	
20	Emma Hacker	22:14	2-7	1-5	1-2	0	3	3	3	3	7	0	1	1	0	0	0	0	3 <sup>rd</sup> FG% 0:7	
53	Bridgid Fox	19:47	3-4	0-0	3-3	3	1	4	0	4	9	0	1	0	0	0	0	0	FT% 4:4	
22	Kalissa Lacy	19:15	3-11	2-7	0-0	4	0	4	0	3	8	2	0	0	0	0	1	0	4 <sup>th</sup> FG% 4:11	
Team							2	1	3	0	0	0							3PT% 1:2	
Totals			19-60	4-21	18-23	14	17	31	21	21	60	11	18	12	1	4	1	-13	FT% 7:11	
Technical Fouls:Kirkwood 3 <sup>rd</sup> 8:56																				
GM FG% 19:60																				
3PT% 4:21																				
FT% 18:23																				

	XAV	EKU	Points from	XAV	EKU	Period by Period Scoring					
Biggest lead	13 (4 <sup>th</sup> 0.25)	2 (1 <sup>st</sup> 8.33)	Turnovers	21	25		1st	2nd	3rd	4th	TOT
Best Scoring Run	9(1 <sup>st</sup> 2.55)	9(2 <sup>nd</sup> 1.35)	Paint	36	26	XAV	22	10	16	25	73
Lead Changes	6		Second Chance	14	8						
Times Tied	9		Fast Breaks	11	8	EKU	16	16	12	16	60
Time with Lead	33:09	01:06	Bench	7	24						

Eastern Ky. - 57		Record: 2-4																			
NO. Name	Min	FG		3P		FT	Rebounds		Fouls		TP	AS	TO	ST	Blocks		+/-	Shooting By Period			
		M	A	M	A		DR	OR	FF	PF					BS	BA		1st	FG%	2nd	FG%
00 Jayla Johnson	FG 29:52	8-19	2-5	2-6	7	0	7	3	6	20	1	1	2	2	0	1	-6	1st	FG%	7-18	38.9%
20 Emma Hacker	FG 16:15	0-4	0-1	0-0	0	0	0	0	1	0	1	0	1	2	0	0	-13	1st	FG%	3-6	50.0%
11 Ariel Kirkwood	G 27:26	3-8	1-1	3-5	4	3	7	4	5	10	4	5	5	0	0	-8	2nd	FG%	6-7	85.7%	
15 Brii Bass	G 28:25	2-8	0-4	0-4	4	4	8	3	5	8	1	0	0	0	0	0	-8	2nd	FG%	2-13	15.4%
30 Alice Recanat	G 29:50	0-9	0-2	4-6	1	2	3	0	5	5	2	2	1	0	2	-15	3rd	FG%	2-7	28.6%	
22 Kalissa Lacy	09:33	2-7	2-6	0-0	0	0	0	0	0	6	0	1	1	0	1	-1	3rd	FG%	5-18	27.8%	
2 Kayla Freeman	11:33	0-1	0-1	0-0	0	0	1	2	0	0	0	0	0	0	0	0	-8	3rd	FG%	0-3	0.0%
31 Briia Crittendon	04:30	0-0	0-0	0-0	0	0	0	0	0	0	0	0	2	0	0	0	-8	3rd	FG%	1-2	50.0%
53 Bridget Cox	17:38	1-4	0-0	2	1	3	2	2	0	2	1	2	1	0	0	-19	4th	FG%	4-19	21.1%	
5 Ally Collett	17:46	2-6	2-6	0-0	0	0	0	0	0	6	1	2	2	0	0	-6	4th	FG%	2-9	22.2%	
35 L'Iyah Green	07:14	0-2	0-0	0-0	1	1	2	0	0	0	0	0	0	0	0	1	4th	FG%	4-8	50%	
Team					2	6	8		0								GM FG%	18-68	26.5%		
Totals		18-68	7-25	14-21	21	18	39	14	22	57	9	19	14	0	5	-14	FG%	7-25	28.0%		
																	3PT%	14-21	66.7%		
																	Technical Fouls:	NONE			

Nilinos - 71		Record: 4-4														Dead Ball Rebounds: 4-1			
NO. NAME	Min	FG		3P	FT	Rebounds		Fouls		TP	AS	TO	Blocks		+/-				
		M-A	M-A			OR	DR	PF	FD				BS	BA					
44 Kendall Bostic	F 32:59	5-10	0-2	2-4	5	17	22	1	12	1	5	2	2	0	30				
22 Eva Rubin	C 13:25	2-2	1-1	1-2	1	2	3	3	2	6	0	3	0	1	0				
11 Jada Peebles	G 33:30	3-8	3-7	0-0	2	2	2	2	2	9	6	0	1	0	19				
24 Adalia McKenzie	G 15:46	3-3	0-0	2	1	3	2	1	6	1	2	0	1	0	5				
32 Aaliyah Nye	G 29:26	5-11	1-1	1-2	0	0	2	3	16	2	0	1	0	1	19				
14 Geovana Lopes	18:39	3-6	0-0	4-4	2	2	4	2	3	10	3	2	1	0	21				
8 DeMyia Brown	20:13	3-8	2-4	0-0	1	1	3	0	8	2	1	0	0	0	6				
20 J'avia Porter	04:36	1-1	0-0	0-0	0	0	1	0	0	1	0	0	1	0	3				
0 Sara Anastasiaksa	11:54	0-2	0-1	0-0	0	2	1	0	2	1	0	1	0	0	0				
12 Jayla Oden	11:08	0-3	0-1	2-2	0	4	4	2	1	2	1	3	2	0	0				
2 Lyric Brooks	03:24	0-0	0-0	0	1	1	0	0	0	0	0	0	0	0	-7				
3 Solape Amusan	03:24	0-1	0-1	0-0	0	0	0	1	0	0	1	0	0	0	-7				
15 Keanna Rembert	02:24	0-0	0-0	0-0	0	0	0	2	0	0	4	1	0	0	-4				
Team						1	0	1		0	1								
Totals		25:25	11:28	10:14	11	32	43	22	14	71	25	8	5	0	14				

Technical Fouls: NONE

Dead Ball Rebounds: 4-0

	EKU	ILL	Points from	EKU	ILL	Period by Period Scoring				
Biggest lead	7 (1 <sup>st</sup> 8:04)	21 (4 <sup>th</sup> 4:22)	Turnovers	23	20					
Best Scoring Run	9 (1 <sup>st</sup> 2:27)	17 (2 <sup>nd</sup> 3:33)	Point	16	22	EKU	23	9	11	14
Lead Changes			Second Chance	16	15					
Times Tied	1		Fast Breaks	2	0	ILL	17	22	23	9
Time with Lead	08:59	27:53	Bench	14	22					

Game Time: 1:00 PM  
Game Duration: 1:55  
Attendance: 437

**Officials:** Angie Enlund, Jamie Broderick, Natosha Harris

Chattanooga - 55		Record: 1-9														
NO. Name	Min	FG		3P	FT	Rebounds		Fouls		TP	AS	TO	ST	Blocks	+/-	Shooting By Period
		M/A	M/A			OR	DR	TO	PF							
5 Casey Cornelius	F 35:14	3-11	0-0	0-0	0-0	0	0	2	0	1	2	1	0	1	2	1st FG% 8-15 53.3%
5 Sigrun Oleafsdottir	F 28:18	3-8	0-4	0-0	0	8	4	4	0	6	2	1	1	0	10	2nd FG% 2-6 33.3%
10 Dena Jarrells	F 31:20	3-8	2-5	0-0	0	2	2	1	1	6	1	5	0	1	9	3rd FG% 1-6 16.7%
14 Amaria Pugh	G 25:24	3-9	0-4	0-1	0-0	2	2	1	1	6	2	1	1	0	0	1st FG% 1-7 14.3%
22 Brooke Hampel	G 29:49	5-9	0-2	0-1	2	2	4	1	1	10	0	4	1	0	0	2nd FG% 0-2 0%
12 Destiny McClendon	19:51	4-8	1-5	1-3	1	2	2	2	1	1	3	2	0	0	10	3rd FG% 5-12 41.7%
21 Addie Porter	14:51	1-3	1-2	2-2	0	2	2	2	0	0	2	2	0	0	6	3rd FG% 0-3 0%
33 Karsen Murphy	12:18	1-3	0-1	0-2	1	2	3	3	2	0	0	0	1	0	15	3rd FG% 0-1 0%
15 Leah Jones	02:55	0-0	0-0	0-0	0	0	0	0	0	0	0	0	0	0	-3	4th FG% 1-6 16.7%
Team						9	24	33	18	52	12	14	13	2	2	5
Totals	23:59	4-24	5-11	9	0	23	18	11	52	12	14	13	2	2	5	GM FG% 23-59 39.0%
Technical Fouls: NONE																
3PT% 4-24 16.7%																
FT% 5-11 45.5%																

Eastern Ky. - 60		Record: 3-4										Dead Ball Rebounds: 2													
		FG		3P		FT		Rebounds		Fouls		TP		AS		TO		ST		Blocks					
NO.	Name	Min						OR	DR	TOT	PF	FO		AS	TO	ST		BS	BA		+	-			
00	Jayla Johnson	F 35:12	5-17	2-3	5-6	1	11	12	2	5	17	0	4	0	4	0	0	0	0	0	5	1 <sup>st</sup>	FG%	2-16	12.5%
20	Emma Hacker	F 24:15	1-4	0-3	2-2	0	4	4	2	2	4	1	0	0	0	0	0	0	0	6	3PT%	1-7	14.3%		
11	Alex Kirkwood	E 21:36	1-3	0-1	0-0	3	1	4	0	0	2	2	4	2	2	0	0	0	0	10	2 <sup>nd</sup>	FG%	6-13	46.2%	
15	Allye McLean	E 18:45	1-5	0-0	1-2	0	0	0	0	0	0	2	1	0	0	0	0	0	0	6	3PT%	1-4	25.0%		
30	Alice Recanatani	G 31:28	8-15	3-3	1-2	0	1	1	3	1	20	2	1	0	1	1	0	0	0	9	FT%	0-1	0.0%		
35	Bridgid Fox	10:56	1-3	0-0	2-2	2	2	4	1	2	4	0	0	0	0	0	0	0	0	8	3 <sup>rd</sup>	FG%	6-14	42.9%	
5	Ally Collett	08:49	0-2	0-2	0-0	0	0	0	1	0	0	1	1	1	0	0	0	1	0	1	3PT%	2-6	33.3%		
22	Kalissa Lacy	07:23	0-3	0-2	0-0	0	0	0	1	0	0	0	1	1	2	0	0	0	0	3	FT%	3-4	75.0%		
35	L'lyah Green	17:02	1-1	0-0	3-4	3	2	5	0	2	5	1	1	0	0	0	0	0	0	13	4 <sup>th</sup>	FG%	5-14	35.7%	
2	Kayra Freeman	10:59	0-1	0-0	2-2	0	0	0	0	1	2	0	1	0	0	0	0	0	0	9	3PT%	1-1	100.0%		
9	Brie Crittendon	13:38	1-3	0-1	1-2	2	3	5	1	2	3	0	2	1	0	0	0	0	0	6	FT%	1-6	33.3%		
3	Unlabeled																				GM FG%	19-57	33.0%		
																					3PT%	5-18	27.8%		
Totals			19-57	5-18	17-22	14	30	44	11	18	60	9	16	7	2	2	0	5				FT%	17-22	77.3%	
Technical Fouls: NONE																									
Dead Ball Rebounds: 21																									

	UTC	EKU	Points from	UTC	EKU	Period by Period Scoring					
<b>Biggest lead</b>	15 (1 <sup>st</sup> 3:24)	10 (4 <sup>th</sup> 6:00)	<b>Turnovers</b>	14	18		1st	2nd	3rd	4th	TOT
<b>Best Scoring Run</b>	11 (1 <sup>st</sup> 5:49)	9 (3 <sup>rd</sup> 7:31)	<b>Paint</b>	30	22	<b>UTC</b>	19	11	13	12	55
<b>Lead Changes</b>		1	<b>Second Chance</b>	4	15	<b>EKU</b>	8	21	17	14	60
<b>Times Tied</b>		0	<b>Fast Breaks</b>	0	0						
<b>Time with Lead</b>	19:32	18:37	<b>Bench</b>	18	14						

Eastern KY - #2		Record: 3-5																							
NO.	Name	Min	FG		3P		FT		Rebounds		Fouls		TP		AS		To ST		Blocks		+/-	Shooting By Period			
			M-A	M-A	M-A	M-A	OR	DR	OT	PF	FO	TS	AS	TO	ST	BS	BA	1st FG	1st FT	2nd FG		2nd FT			
00	Jayla Johnson	F 19:56	5-11	0-0	2-2	1	4	5	4	2	12	1	4	2	1	0	0	3	1	0	-12	3PT%	0-0	0.0%	
20	Emma Hacker	F 10:30	0-1	0-1	0-0	2	2	2	1	0	0	0	3	1	0	0	0	0	-7	FT%	0-0	0%			
11	Ariel Kirkwood	G 25:27	1-4	0-0	1-2	3	5	8	1	3	2	6	1	1	0	-8					2nd FG	3-13	23.1%		
15	Bria Bass	G 22:08	4-8	0-1	1-2	0	1	1	0	3	9	2	0	0	0	-22					3PT%	1-3	33.3%		
30	Alex Rancanti	G 2:04	2-8	0-0	1-1	1	7	6	1	7	6	1	1	0	0	-17					FT%	7-7	100.0%		
3	Bria Crittendon	G 31:25	2-6	0-1	6-6	2	5	7	1	7	10	3	1	2	0	-16					3rd FG	8-15	53.3%		
53	Bridgid Fox	F 25:02	3-6	0-0	5-5	1	6	7	2	4	11	1	2	0	0	-8					3PT%	0-1	0.0%		
2	Kayra Freeman	O 04:49	1-1	0-0	2-2	0	0	0	1	4	0	0	1	0	0	-8					FT%	5-5	100.0%		
5	Ally Collett	F 13:37	2-6	1-3	0-0	1	0	1	0	5	5	2	3	0	1	-1					4th FG	4-11	36.4%		
35	L'Yahia Green	G 09:51	1-2	0-0	0-0	1	1	1	0	2	0	1	0	0	0	-1					3PT%	0-3	0.0%		
22	Kalissa Lucas	G 02:34	0-0	0-0	0-0	0	0	0	1	0	0	0	0	0	0	-1					FT%	6-7	85.7%		
1	Arina Khlopkova	O 11:46	0-0	0-0	0-0	0	0	0	0	0	0	0	0	0	0	-3					GM FG%	21-53	39.6%		
Team						1	2	3				1													
Totals			21-53	1-7	19-23	9	27	36	14	25	62	14	27	11	2	-18									
																						...Technique Fouls=NON		...Play Ball Score=3-19	

Miami (OH) - 80			Record: 4-3										Technical Fouls: NONE											
NO.	Name	Min	FG M-A	3P M-A	FT M-A	Rebounds OR DR	Fouls PF FT	TP	AS	TO	ST	Blocks BS BA	+/-	Shooting By Period										
34	Amari Freeman	F 14:14	1-1	0-0	0-0	4	1	2	3	4	2	6	1	0	2	1	0	1	1st	FG	9-13	69.2%		
1	Maddi Cluse	G 25:41	5-12	1-6	2-3	0	2	2	2	2	4	13	0	1	1	0	0	1	1st	FG	8-15	62.5%		
4	Vanessa Garretts	G 23:38	3-7	3-7	0-0	2	0	2	2	5	0	9	4	2	3	1	1	7	2nd	FG	3-3	100%		
13	Ivy Wolf	G 32:20	5-11	4-9	2-2	1	1	2	3	3	2	16	6	1	1	0	1	10	3rd	FG	6-20	30.0%		
24	Isabella Scott	G 36:08	5-14	3-6	0-0	2	0	3	6	1	3	3	3	1	0	0	1	11	3rd	FG	10-11	100.0%		
3	Tegah Foster-Walker	F 16:21	1-4	0-0	0-0	1	5	1	2	1	2	2	2	0	2	1	0	10	3rd	FG	0-2	0%		
10	Edyn Batiste	F 21:50	5-9	1-2	0-0	0	2	2	1	1	1	11	3	3	4	0	1	9	3rd	FG	2-4	50.0%		
32	Katey Richelson	F 18:30	3-4	0-0	0	1	2	3	2	1	6	1	1	1	0	0	1	2	4th	FG	5-6	83.3%		
45	Thanna Fulton	F 06:50	2-3	0-0	0	0	1	1	1	0	4	0	2	0	0	0	0	1	4th	FG	9-21	42.9%		
0	Clare Chambers	F 01:45	0-0	0-0	0-0	0	0	0	1	0	0	0	0	0	0	0	0	1	4th	FG	0-10	40.0%		
22	Payton Boruff	G 02:43	0-2	0-2	0-0	1	0	1	1	0	0	0	0	0	0	0	0	2	4th	FG	0-0	0%		
Team						2	1	3			0	0	0	0	0	0	0	0	GM FG	30-47	64.8%			
Totals				30-67	12-32	8-11	12	24	36	25	14	80	22	20	17	3	2	18	FT%	12-32	37.5%			
																		Technical Fouls: NONE						
																		Team Ball Rebounds: 29						

[illegible]



Official Basketball Box Score -- Game Totals -- Final Statistics  
Eastern Kentucky vs Morehead State  
12/15/21 5 p.m. at Morehead, Ky.

Eastern Kentucky 66 • 4-5

#	Player	Total		3-Ptr		Rebounds			PF	TP	A	TO	Blk	Stl	Min
		FG-FGA	FG-FGA	FG-FGA	FT-FTA	Off	Def	Tot							
00	JOHNSON,JAYLA	6-10	1-3	2-2	1 3 4	1	3	4	1	15	2	3	1	0	15
03	CRITTENDON,BRIE	2-7	0-3	2-2	1 5 6	0	6	6	0	6	2	1	0	1	25
11	KIRKWOOD,ARIEL	5-9	1-2	0-0	5 7 12	3	11	1	2	0	4	32			
15	BASS,BRIA	3-10	0-2	0-0	1 3 4	1	6	2	2	0	2	24			
30	RECANATI,ALICE	1-7	1-4	1-2	4 2 6	1	4	7	3	0	0	28			
01	KHLOPKOVA,ARINA	1-2	0-0	0-0	0 0 0	1	2	0	1	0	0	5			
02	FREEMAN,KAYRA	1-2	0-0	1-2	1 1 2	1	3	3	1	0	1	10			
05	COLLETT,ALLY	0-3	0-2	0-0	1 1 2	0	0	0	1	0	0	13			
10	BALDWIN,GEORGIA	0-0	0-0	0-2	0 1 1	0	0	0	0	0	0	2			
20	HACKER,EMMA	3-5	3-4	0-0	1 1 2	3	9	0	1	0	0	19			
22	LACY,KALISSA	0-2	0-2	0-0	0 0 0	0	0	0	1	0	1	5			
35	GREEN,I'LIYAH	5-7	0-0	0-0	2 2 4	1	10	0	2	0	2	22			
Team					1 3 4			1							
Totals		27-64	6-22	6-10	18 29 47	12	66	17	19	1	11	200			
1st - FG %: 6-17 35.3% 2nd: 8-16 50.0% 3rd: 6-17 35.3% 4th: 7-14 50.0% Game: 27-64 42.2% Deadball Rebounds 2															
3FG %: 1-7 14.3% 4-8 50.0% 1-6 16.7% 0-1 0.0% 6-10 60.0%															
FT %: 3-4 75.0% 0-0 0.0% 0-0 0.0% 3-6 50.0%															

Morehead State 43 • 1-7

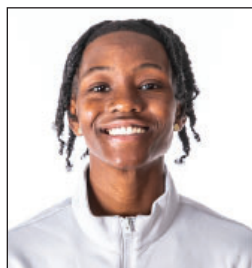
#	Player	Total		3-Ptr		Rebounds			PF	TP	A	TO	Blk	Stl	Min
		FG-FGA	FG-FGA	FG-FGA	FT-FTA	Off	Def	Tot							
02	CLAUDE,JADA	4-7	0-1	0-0	1 0 1	0	8	0	2	0	0	21			
04	BROWNING,MORGAN	0-3	0-1	0-0	0 1 1	0	0	1	1	0	0	19			
11	DENSON,ALANA	0-2	0-2	0-0	0 1 1	5	0	3	7	0	0	19			
30	SMITH,TERRI	4-16	1-9	0-0	0 4 4	2	9	5	5	0	3	39			
42	MOORE,TYLER	2-4	2-4	0-0	0 1 1	0	6	1	1	2	0	23			
00	GAINES-BURNS,JAZMYN	0-1	0-1	0-0	0 1 1	2	0	0	0	1	0	15			
10	ADAMS,FREDDY	1-3	1-3	0-0	0 1 1	2	3	1	1	0	1	15			
23	RAINFORD,AIDEN	2-4	0-0	0-0	1 2 3	0	4	0	0	1	0	7			
24	ROSE,JANAY	1-1	0-0	0-0	0 1 1	3	2	0	1	0	1	11			
32	KEATHLEY,KAITLYN	2-6	2-6	2-4	0 0 0	0	8	0	1	0	0	17			
35	MCDONALD,JULAN	0-3	0-1	3-4	3 2 5	0	3	2	1	2	1	14			
Team					0 7 7	1									
Totals		16-50	6-28	5-8	5 21 26	15	43	13	20	6	6	200			
1st - FG %: 4-13 30.8% 2nd: 3-11 27.3% 3rd: 4-13 30.8% 4th: 5-13 38.5% Game: 16-50 32.0% Deadball Rebounds 3															
3FG %: 1-6 16.7% 0-6 0.0% 3-10 30.0% 2-6 33.3% 6-28 21.4%															
FT %: 0-0 0.0% 3-4 75.0% 1-2 50.0% 1-2 50.0% 5-8 62.5%															

Officials: Aaron Brooks, Kayla Maxey, Thurman Leggs III  
Technical fouls: Eastern Kentucky-None. Morehead State-TEAM.  
Attendance: 433

Score by periods	1st	2nd	3rd	4th	Total						
Eastern Kentucky	16	20	13	17	66	Points	In	Off	2nd	Fast	
Morehead State	9	9	12	13	43	EKU	34	23	11	2	24
						MOR-W	14	10	2	2	20

Last FG - ECU 4th-01:29, MOR-W 4th-00:57.  
Largest lead - ECU by 29 4th-06:28, MOR-W None.  
EKU led for 38:47, MOR-W led for 00:00. Game was tied for 01:13.  
Score tied - 1 time.  
Lead changed - 0 times.

## Radio / Television Roster



**#00 Jayla Johnson**  
Forward • 6-2 • Sr.  
Dallas, Texas  
Texas State



**#1 Arina Khlopkova**  
Guard • 6-0 • r-So.  
Moscow, Russia.  
UTEP



**#2 Kayra Freeman**  
Guard • 5-6 • Fr.  
Elizabethtown, Ky.  
Elizabethtown HS



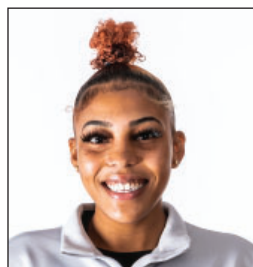
**#3 Brie Crittendon**  
Guard • 5-10 • Fr.  
Union, Ky.  
Ryle High School



**#5 Ally Collett**  
Guard • 5-7 • r-Fr.  
London, Ky.  
Western Kentucky



**#10 Georgia Baldwin**  
Guard/Forward • 6-0 • r-Fr.  
Melbourne, Australia.  
Box Hill Senior Secondary



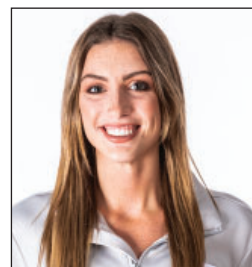
**#11 Ariel Kirkwood**  
Guard/Forward • 6-0 • r-So.  
Milwaukee, Wis.  
Morehead State



**#13 Ebony Simionovich**  
Forward • 5-11 • Fr.  
Lavon, Israel.  
Israeli National Team



**#15 Bria Bass**  
Guard/Forward • 5-11 • Gr.  
Tucker, Ga.  
Tucker High School



**#20 Emma Hacker**  
Forward • 6-3 • r-So.  
Frenchburg, Ky.  
Meniffee County High School



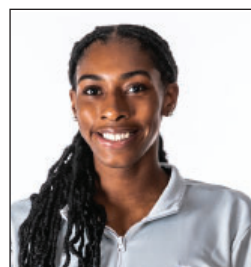
**#21 Anysa Jordan**  
Forward • 6-1 • r-So.  
Fairmont, W.Va.  
Fairmont Senior High School



**#22 Kalissa Lacy**  
Guard • 5-9 • Fr.  
Charleston, W.Va  
George Washington HS



**#30 Alice Recanati**  
Guard • 5-9 • r-Fr.  
Bergamo, Italy  
Team 86 Villasanta



**#35 I'Liyah Green**  
Center • 6-2 • Gr.  
Louisville, Ky.  
Cincinnati



**#53 Bridgid Fox**  
Forward • 6-0 • r-So.  
Altoona, Pa.  
Detroit Mercy



**Greg Todd**  
Head Coach  
1st Season  
Eastern Kentucky, 1983



**Matt Thune**  
Assistant Coach  
3rd Season  
Indiana, 2012



**Abby Owings**  
Assistant Coach  
1st Season  
Thomas More, 2018



**Coretta Brown**  
Assistant Coach  
1st Season  
North Carolina, 203



**Lindsay Hleronymus**  
Director of Operations  
2nd Season  
Transylvania, 2016